



 Deroma 2023
Open your Garden





*Vasi per le vostre piante
da quasi 70 anni.*

POTS FOR YOUR PLANTS FOR
ALMOST 70 YEARS.

BLUMENTÖPFE FÜR IHRE
PFLANZEN SEIT FAST 70 JAHREN.

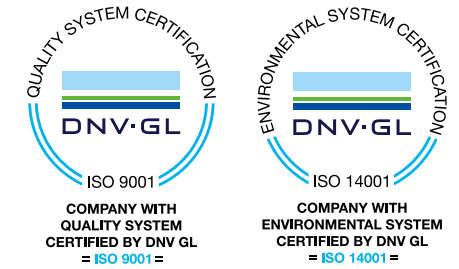


About *Depoma*

La storia della nostra azienda inizia a Malo, in Veneto, nel 1955. Da sempre, abbiamo scelto di unire l'antica tradizione della terracotta e l'eccellenza tecnologica del nostro territorio e ci siamo impegnati a cercare le migliori argille per produrre vasi di terracotta di primissima qualità. Nel corso degli anni, passione e dedizione hanno permesso al nostro gruppo di diventare un punto di riferimento per l'intero settore del garden. Ogni giorno, migliaia di vasi escono dai nostri impianti produttivi e vengono spediti in ogni parte del mondo, abbellendo i giardini dei nostri clienti.

We are an Italian company and we were born in Malo, northern Italy, in 1955. From the very beginning, we have chosen to combine the tradition of terracotta with the technological excellence typical of the area we come from, in order to have the best clay for the best pots. During the time, passion and dedication have led us to become a reference in the gardening industry. Every day, our two industrial plants can make thousands of pots we ship worldwide to decorate the garden of our customers.

Die Geschichte unserer Firma beginnt in Malo (Venetien) im Jahr 1955. Von Anfang an haben wir uns dafür entschieden, die Tradition der Terrakotta mit der für die Region, aus der wir kommen, typischen technologischen Exzellenz zu verbinden, um den besten Ton für die besten Töpfe zu bekommen. Im Laufe der Zeit haben uns Leidenschaft und Hingabe zu einem Maßstab in der Gartenbranche werden lassen. Jeden Tag können unsere zwei Industrieanlagen tausende von Töpfen produzieren, die wir weltweit versenden, um die Gärten unserer Kunden zu schmücken.



CERTIFICAZIONI STABILIMENTO MALO

Soddisfazione dei clienti e protezione dell'ambiente, per queste forti motivazioni abbiamo deciso di adottare ed applicare attivamente il sistema di gestione integrato Certificato UNI EN ISO 14001 e UNI EN ISO 9001. Ponendo al primo posto la Qualità dei nostri prodotti e dei servizi vendita e post vendita ed il rispetto dell'ambiente verificando il corretto impiego delle risorse naturali.

MALO PLANT CERTIFICATIONS

Customer satisfaction and environment protection are the main reasons why we decided to apply the integrated management UNI EN ISO 14001 and UNI EN ISO 9001. Our goal is to pursue the quality of our products and of the sales and post-sales assistance, checking the correct employ of natural resources to guarantee the protection of the environment.

PRODUKTIONSSTÄTTE MALO - ZERTIFIZIERUNGEN

Kundenzufriedenheit und Umweltschutz sind die starken Gründen warum wir uns entschieden haben, das integrierte Managementsystem nach UNI EN ISO 14001 und UNI EN ISO 9001 zu übernehmen und aktiv anzuwenden. Wir achten zuerst auf die Qualität unserer Produkte, den Verkauf und den Kundendienst und zollen der Umwelt Respekt, indem wir besonderen Wert auf die korrekte Nutzung der natürlichen Ressourcen legen.

Passion & *reliability*

Da quasi 70 anni, lavoriamo con dedizione e **passione**, facendo del nostro meglio per migliorarci ogni giorno. L'amore per le piante e la natura ci porta prestare la massima attenzione alle richieste e ai bisogni dei nostri clienti e alle nuove tendenze del mercato.

Ci proponiamo come un partner ideale a cui rivolgersi per scegliere tra una vasta gamma di vasi multimateriale della migliore qualità. Oltre alla terracotta, che da sempre caratterizza la nostra storia di produttori, utilizziamo anche materiali innovativi, leggeri e funzionali, in colori e decori originali.

La presenza del nostro marchio in oltre 10.000 Garden Center e in tutte le maggiori catene DIY e food, ci conferma come un leader **affidabile**, riconosciuto in tutto il mondo.

*Since almost 70 years, we have been working with commitment and **passion**, doing our best to improve ourselves every day. Love for plants and nature, drives us to pay attention to our customers' requests and needs and to keep updated with the latest trends.*

We want to be an ideal partner, able to provide a big range of the best quality multi-material pots. Besides terracotta- that has made us a well-known producer, we use also innovative, light and functional material in trend colors and with new style.

Our brand is distributed in more than 10,000 Garden Center and in all major DIY and food chains, confirming us as a reliable leader, recognized all over the world.

Seit fast 70 Jahren arbeiten wir mit Hingabe und Leidenschaft daran, jeden Tag unser Bestes zu geben, um uns zu verbessern. Die Liebe zu Pflanzen und Natur führt uns dazu, die Wünsche und Bedürfnisse unserer Kunden und neue Markttrends genau zu beachten.

Wir bieten uns als einen idealen Partner an, mit einer breiten Palette von hochwertigen Töpfen aus verschiedenen Materialien, auf den Verlass ist.

Neben Terrakotta, die schon immer unsere Geschichte als Hersteller geschrieben hat, benutzen wir auch innovative, leichte und funktionelle Materialien mit originellen Farben und Dekorationen.

Die Präsenz unserer Marke in über 10.000 Gartencentern und in allen großen DIY- und Lebensmittelketten bestätigt uns als zuverlässigen und weltweit anerkannten Marktführer.



Open your *garden*

Il nostro pay-off «**OPEN YOUR GARDEN**» è un invito all'amore per le piante e la natura, un invito ad aprire i nostri spazi verdi al mondo e a condividere il nostro tempo all'aperto, in compagnia dei nostri amici e delle nostre famiglie.

Le ultime tendenze rivelano che l'attenzione dei consumatori è sempre più rivolta a prodotti e stili sostenibili e naturali e la terracotta è uno dei materiali che incarna perfettamente questo nuovo trend. Stiamo assistendo a una completa trasformazione dei consumi da parte di una nuova generazione di acquirenti chiamati Millennials, una popolazione giovane sotto i 35 anni, che nel 2025 costituirà il 75% della forza lavoro. Per rispondere al loro bisogno di avere prodotti ecologici e durevoli nel tempo, ci siamo orientati verso materiali più sostenibili come plastica proveniente dalla raccolta differenziata, destinata a produrre vasi a loro volta riciclabili.

La nostra strategia è anticipare e superare le aspettative e i bisogni di questa categoria di consumatori, consapevoli della loro grande influenza nel mercato del garden.

*Our pay off «**OPEN YOUR GARDEN**» is an invitation to open to love for plants and nature, to open our green spaces to the world, spending our time with friends and family outdoors.*

Last trends reveal customers' attention focus more on sustainability and natural products and terracotta is a material that perfectly embodies this new trend.

We are witnessing a complete transformation of customers' behaviour of a new generation of buyers called Millennials,

a group of young people under 35, who will represent 75% of the global workforce by 2025. We have chosen more sustainable products, like recyclable plastic pots made from plastic waste sorting, in order to satisfy their need to have eco-friendly and long lasting products.

As this category of customers is playing a big role in gardening, we want to do our best to anticipate and exceed their expectations and needs.

Unser Pay-off «**OPEN YOUR GARDEN**» ist eine Einladung für Liebe zu Pflanzen und Natur, um die eigenen Grünflächen der Welt zu öffnen und die eigene Freizeit mit Freunden und Familie draussen zu verbringen.

Die aktuellsten Trends zeigen, dass die Kunden verstärkt Wert auf Nachhaltigkeit und natürliche Produkte legen, und Terrakotta ist ein Material das diesen neuen Trend perfekt verkörpert.

Wir erleben eine vollständige Transformation des Konsums durch eine neue Käufergeneration namens Millennials, eine junge Bevölkerung unter 35 Jahren, die im Jahr 2025 75 % der Erwerbstätigen ausmachen wird. Um ihren Bedarf an ökologischen und langlebigen Produkten zu decken, haben wir uns nachhaltigeren Materialien wie Kunststoffen aus der getrennten Abfallsammlung zugewandt, die wiederum dazu bestimmt sind, recycled zu werden zu neuen Töpfen.

Unsere Strategie besteht darin, die Erwartungen und Bedürfnisse dieser Verbraucherkategorie zu antizipieren und zu übertreffen, da wir uns ihres großen Einflusses auf dem Gartenmarkt bewusst sind.



Index



terracotta machine-made

AquaDO.....	14
Cotto Garden	16
Mini Sun	26
Duo White.....	30
Primitivo White.....	32
White Garden.....	34
Duo Grafite	44
Primitivo grafite.....	46
Grafite.....	48
Complementary	54

terracotta Galestro

Sicilia	58
Olive	60
Siena.....	62
Mini Siena	64
Giotto	68
Luna.....	70
Etrusco	72
Saucers.....	74

terracotta hand-made

Cellini	78
Atlas	80
Dulce.....	82
Caliente.....	84
Animals & Spherès.....	86

glazed Terracotta

Ocean.....	90
Seaside.....	92
Irazu	94
Lagoon	96
Opus	98
Nelumbo.....	100
Majorelle	102
Acapulco	104
Azulejos	106
Kinfolk.....	108
Romance	110
Wild Herbs	112
Menagerie Caravane	114
Wolly.....	118
Uccellino	120
Boracay	122
Gingko	124

fiber

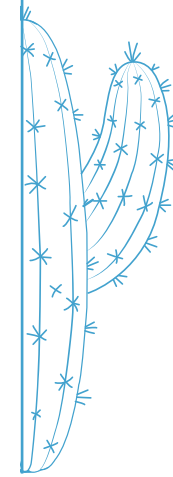
Minéral.....	128
Rust	130

Recyclat material

Like R	134
Save R	140
Ninfea R	152
Rollpot	155
Day R	158

plastic material

Millennium.....	172
Transparent saucer.....	188
Enjoy.....	189
Samba	190



Terracotta machine-made

L'argilla è una roccia sedimentaria che si dissolve a contatto con l'acqua e composta da una struttura a strati che ne permette l'assorbimento. Largamente usata nella produzione ceramica fin dall'antichità, se bagnata diventa molto malleabile e può quindi essere facilmente lavorata. Quando invece viene sottoposta a un intenso riscaldamento diventa terracotta, più solida e resistente.

La terracotta rappresenta l'ambiente ideale per il benessere della pianta, poiché conferisce al vaso porosità e leggera permeabilità e quindi consente alla pianta di respirare e crescere al meglio.

Costituisce di fatto una riserva naturale d'acqua, in quanto è un materiale capace di trattenere il liquido in eccesso e di rilasciarlo quando la pianta ne ha bisogno. Offre una resistenza al gelo fino a una temperatura superiore a - 15°C, garantendo così alle radici di essere protette durante i mesi più freddi.

Clay is a special type of sedimentary rock that dissolves in water and enables it to be absorbed thanks to a layered structure. Its use started from very ancient times as when clay is wet is very flexible and easily workable. When it is put in hot temperatures it becomes solid and it is called terracotta.

Terracotta is perfect for the well-being of the plant as the pot is porous and slightly permeable and allows the exchange of oxygen, essential for plant's respiration and growth.

It is a natural water storage as it can store excess liquid and can release it to the plant when needed. It offers frost resistance above -15°C, protecting the roots during colder climates.

Ton ist ein Sedimentgestein, das sich bei Kontakt mit Wasser löst. Es besteht aus einer Schichtstruktur, die die Absorption von Wasser ermöglicht. Seit dem Altertum wurde Ton in der Herstellung von Keramik benutzt; im nassen Zustand wird Ton formbar und lässt sich so leicht bearbeiten. Wenn es die Vorgänge des intensiven Aufwärmens durchläuft, wird es fest und endlich Terrakotta. Terrakotta stellt die ideale Umgebung für das Wohlbefinden der Pflanzen dar; die Töpfe bleiben porös und leicht wasserdurchlässig und die Pflanzen können optimal atmen und wachsen. Terrakotta ist fast wie ein natürliches Wasserreservoir, das überschüssiges Wasser zurückhält und es wieder freisetzt, sobald die Pflanze es benötigt. Es bietet eine Frostbeständigkeit bis zu -15 °C und schützt das Wurzelsystem während der kälteren Monate.

AquaDo

Cotto Garden

Mini Sun

Duo Grafite

Primitivo Grafite

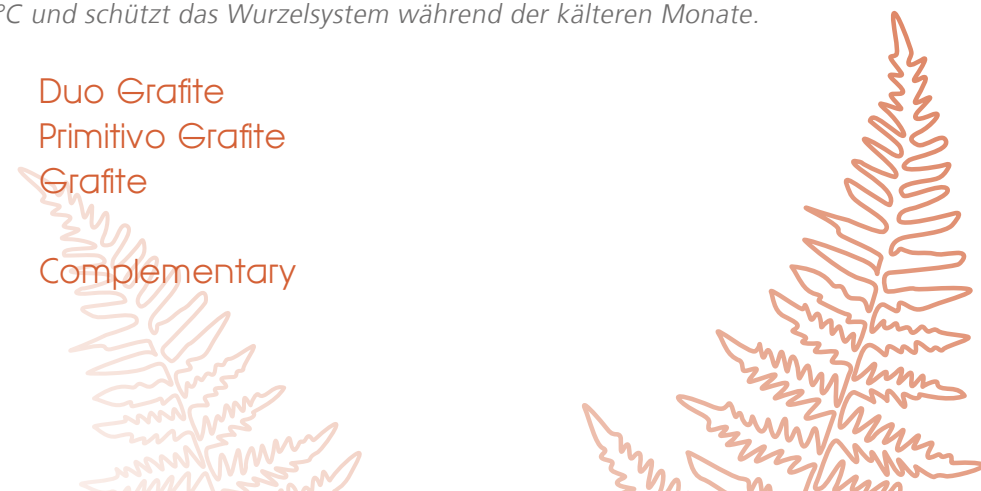
Grafite

Duo White

Primitivo White

White Garden

Complementary



breathable

Porosità e benessere

La terracotta è il materiale più adatto al benessere delle piante perché consentendo la circolazione di aria e acqua, permette un migliore sviluppo delle radici.

Porosity & Well-being

Terracotta is perfect for the well-being of the plant as, by letting air and water circulate, the roots can develop better.

Atmen und Wohlbefinden

Terrakotta ist das am besten geeignete Material für das Wohlbefinden von Pflanzen. Sie ermöglicht die Luft- und Wasserzirkulation und sorgt damit für ein gesundes Wachstum der Wurzeln.

natural

Naturale e riutilizzabile

La terracotta è un materiale naturale al 100%, resistente, riciclabile e rispettoso dell'ambiente.

Natural and Sustainable

Terracotta is a 100% natural, resistant, recyclable, eco-friendly material.

Natürlich und umweltverträglich

Terrakotta ist ein 100% natürliches Material, widerstandsfähig, recyclebar und umweltfreundlich.



also indoor

Piante da interno & Benessere

Grazie ai nostri sottovasi impermeabili i vasi in terracotta possono essere collocati anche dentro casa. Costituiscono una riserva di acqua per la pianta e creano l'ambiente ideale per la sua crescita.

Indoor Plants & Wellness

Thanks to the waterproof plant saucers, terracotta pots can also be placed indoor. They are a water storage for plants and they create a perfect environment for their growth.

Zimmerpflanzen & Wellness

Dank den wasserdichten Untersetzer können Terrakotta-Pflanzgefäße auch im Haus aufgestellt werden. Sie bilden einen Wasservorrat für die Pflanze und schaffen die ideale Umgebung für ihr Wachstum.





Aquado cotto

code	size	Ø	h	Lt
NA150SZ	15	12,2	15,2	0,8



Aquado cotto

code	size	Ø	h	Lt
NA320SZ	32	23,5	32,0	6,9



Traditional Irrigation system



consente di risparmiare fino al 70% di acqua
allows to save up to 70 % water
bis zu 70% Wasserersparnis



massimo 5 gg di autonomia per la misura 15 e 9 gg per la misura 32
maximum 5 days of autonomy for size 15 and 9 days for size 32
maximale Autonomie: 5 Tage für die Größe 15 und 9 Tage für die Größe 32





associated plants

Melissa Officinalis - Mentha Piperita
 Allium Schoenoprasum - Ocimum Basilicum - Thymus
 Rosmarinus Officinalis



Cachepot PERFETTO cotto

code	size	Ø	h	Kg	saucer
4S111SZ	11	11,5	9,2	0,3	-
4S131SZ	13	13,0	11,6	0,4	-
4S151SZ	15	15,2	13,0	0,6	-
4S201SZ	20	20,2	16,3	1,2	-

perfectly suitable
 to the pots of the
 best nurseries



Vaso PERFETTO cotto

code	size	Ø	h	Kg	saucer
4U240SZ	24	24,5	19,7	2,3	23
4U290SZ	29	29,4	23,6	3,6	27
4U390SZ	39	38,9	30,8	8,2	41
4U500SZ	50	49,5	38,9	16,2	46





associated plants

Mentha Cioccolao
Rosmarinus Prostratus - Thymus
Salvia Officinalis Maxima



Vaso STANDARD cotto

code	size	Ø	h	Kg	saucer
01040SZ	4	4,8	4,0	0,03	-
01050SZ	5	5,5	5,0	0,04	-
01070SZ	7	7,0	6,0	0,08	7
01090SZ	9	9,0	8,4	0,2	7
01110SZ	11	11,2	10,0	0,3	9
01130SZ	13	13,1	11,3	0,4	11
01150SZ	15	15,2	13,2	0,5	13
01170SZ	17	16,6	14,9	0,7	15
01190SZ	19	19,9	17,6	1,0	17
01210SZ	21	21,0	19,0	1,2	17
01230SZ	23	23,0	20,3	1,5	19
01250SZ	25	25,1	21,7	2,0	21
01270SZ	27	27,3	24,4	2,5	23
01310SZ	31	31,5	27,6	3,8	25
01350SZ	35	35,7	30,1	5,2	31
01390SZ	39	39,0	34,5	7,4	31
01430SZ	43	43,2	36,0	8,7	36
01460SZ	46	47,1	37,7	11,0	41
01530SZ	53	53,0	47,0	18,8	46



MEZZO Vaso cotto

code	size	Ø	h	Kg	saucer
02170SZ	17	17,1	11,8	0,8	15
02210SZ	21	21,0	14,3	1,2	19
02270SZ	27	27,3	17,9	2,2	25
02310SZ	31	31,5	19,3	3,2	29



Vaso MAGNO cotto

code	size	Ø	h	Kg	saucer
01600SZ	60	60,2	54,3	25,0	51
01780SZ	78	78,8	70,1	60,0	-

*These pot can be combined with feet
We are at page 55*





Cilindro BORDATO cotto

code	size	Ø	h	Kg	saucer
OP080SZ	8	8,6	6,4	0,2	-
OP120SZ	12	12,0	9,1	0,4	13
OP140SZ	14	14,0	11,0	0,6	15
OP180SZ	18	17,6	13,4	0,8	17
OP230SZ	23	22,8	17,2	1,8	23
OP280SZ	28	27,8	21,7	3,1	27
OP330SZ	33	33,6	25,3	5,3	31
OP380SZ	38	38,4	28,9	6,9	36
OP430SZ	43	43,6	32,2	10,0	41
OP480SZ	48	49,0	36,0	13,8	46
OP550SZ	55	56,7	45,0	22,0	51



Vaso CONO cotto

code	size	Ø	h	Kg	saucer
3R160SZ	16	16,0	14,7	0,7	15
3R210SZ	21	21,0	19,4	1,5	19
3R260SZ	26	25,7	23,7	2,6	23



CAMPANA cotto

code	size	Ø	h	Kg	saucer
04270SE	27	27,2	18,3	2,2	19
04310SE	31	31,3	23,6	3,2	23
04370SE	37	36,8	27,2	5,4	27
04440SE	44	44,1	30,2	8,1	31



Vaso DOPPIO BORDO cotto

code	size	Ø	h	Kg	saucer
31420SZ	42	42,5	38,7	11,7	31
31470SZ	47	47,6	41,9	15,1	36
31520SZ	52	51,9	46,1	17,5	41
31570SZ	57	58,5	50,0	25,7	41
31620SZ	62	63,1	53,9	30,1	46
31770SZ	77	79,0	64,5	63,7	-
31870SZ	87	89,6	73,7	77,0	-

Cotto Garden



Ciotola AMERICA Sospesa cotto

code	size	Ø	h	Kg	saucer
22901SE	24	24,0	16,1	2,4	-





Ciotola LISCIA cotto

code	size	Ø	h	Kg	saucer
1Z230SZ	23	23,0	11,5	1,2	17
1Z270SZ	27	27,2	12,4	2,0	23
1Z320SZ	32	31,4	13,7	2,9	27



Ciotola GIGANTE cotto

code	size	Ø	h	Kg	saucer
07190SZ	19	19,6	10,3	0,8	17
07230SZ	23	23,0	11,3	1,3	21
07270SZ	27	28,5	13,2	2,0	23
07320SZ	32	31,4	14,3	2,7	25
07370SZ	37	38,4	17,0	4,2	31



CIOTOLONE cotto

code	size	Ø	h	Kg	saucer
06260SZ	26	26,4	11,3	1,6	19
06310SZ	31	31,7	12,8	2,7	23
06360SZ	36	36,4	14,2	3,4	29
06410SZ	41	42,0	15,2	4,8	29
06510SZ	51	52,8	18,4	9,4	41
06610SZ	61	62,9	21,2	14,7	46
06810SZ	81	82,2	29,0	34,0	-
06990SZ	99	100,2	33,8	48,2	-



Sottovaso cotto
water-repellent

code	size	Ø	h	Kg
87071SZ	7	7,7	1,5	0,05
87091SZ	9	8,7	1,5	0,08
87111SZ	11	11,0	1,9	0,1
87131SZ	13	13,0	2,1	0,2
87151SZ	15	15,7	2,4	0,3
87171SZ	17	17,4	2,5	0,4
87191SZ	19	19,3	2,7	0,5
87211SZ	21	21,1	3,0	0,6
87231SZ	23	23,5	3,1	0,8
87251SZ	25	25,1	3,3	0,9
87271SZ	27	27,7	3,5	1,1
87311SZ	31	31,2	4,0	1,6
87361SZ	36	35,9	4,3	2,2
87411SZ	41	40,9	4,8	2,9
87461SZ	46	47,2	5,3	4,6
87511SZ	51	53,4	5,7	6,1



Sottocassetta cotto
water-repellent

code	size	Ø	h	Kg
0T311SZ	31	32x17	3,1	0,9
0T411SZ	41	42,5x21	3,8	1,7
0T511SZ	51	53x22	4,1	2,6





Cassetta GARDA cotto

code	size	Ø	h	Kg	saucer
4M320SZ	32	32,2x16,2	13,1	2,4	31
4M420SZ	42	42,6x18,2	15,6	4,4	41



Cassetta ROMA cotto

code	size	Ø	h	Kg	saucer
10320SE	32	33x17	14,3	2,6	31
10420SE	42	43x19	17,2	5,1	41
10520SE	52	54x22	19,2	8,0	51



Cassetta SIENA cotto

code	size	Ø	h	Kg	saucer
49620SZ	62	64x32	27,2	16,8	-
49720SZ	72	75x35,5	29,1	23,9	-



Cassetta ROMA LISCIA cotto

code	size	Ø	h	Kg	saucer
2C270SZ	27	27x15	13,0	1,7	31
2C320SZ	32	33x17	14,3	2,6	31
2C420SZ	42	43x19	17,2	4,5	41
2C520SZ	52	54x22	19,2	7,4	51



Cassetta VENEZIA cotto

code	size	Ø	h	Kg	saucer
32520SZ	52	53x20	17,0	6,2	51
32620SZ	62	63x20	17,0	7,8	-
32820SZ	82	84x20	17,0	10,8	-



Cassetta MILLERIGHE cotto

code	size	Ø	h	Kg	saucer
33820SZ	82	86x37,5	35,1	38,9	-
33990SZ	99	103x41	41,3	57,0	-





associated plants

Aloe Arbora Toffe
Kalanchoe Tormentosa
Cactus



VASO cotto

code	size	Ø	h	Kg	saucer
01040SZ	04	4,8	4,0	0,03	-
01050SZ	05	5,5	5,0	0,04	-
01070SZ	07	7,0	6,0	0,08	7
01090SZ	09	9,0	8,4	0,2	7



Cilindro BORDATO cotto

code	size	Ø	h	Kg	saucer
0P080SZ	08**	8,6	6,4	0,2	-
0P120SZ	12	12,0	9,1	0,4	13
0P140SZ	14	14,0	11,0	0,6	15

**senza foro / without hole / ohne loch



Sottovaso cotto
water-repellent

code	size	Ø	h	Kg
87071SZ	07	7,7	1,5	0,05
87091SZ	09	8,7	1,5	0,08
87111SZ	11	11,0	1,9	0,1
87131SZ	13	13,0	2,1	0,2
87151SZ	15	15,7	2,4	0,3





Mini Sun





associated plants

Pittosporum Tobira
Tradescantia



Vaso Alto DUO white white-striped

code	size	Ø	h	Kg	saucer
0D22WS98Z	22	22,4	24,5	2,2	21
0D26WS98Z	26	25,5	29,0	3,2	23
0D30WS98Z	30	30,6	33,5	4,6	27



Vasum DUO white white-striped

code	size	Ø	h	Kg	saucer
5017WS98Z	17	17,0	12,6	0,7	15
5021WS98Z	21	21,0	16,2	1,2	17
5025WS98Z	25	25,8	19,2	1,8	21
5031WS98Z	31	30,9	23,2	3,1	25
5037WS98Z	37	36,7	27,6	5,4	31





associated plants

Bouganvillea
 Agapanthus twister
 Agapanthus africanus



Cilindro Bordato PRIMITIVO white

code	size	Ø	h	Kg	saucer
OP28WS08Z	28	27,8	21,7	3,1	27
OP33WS08Z	33	33,6	25,3	5,3	31
OP38WS08Z	38	38,4	28,9	6,9	36
OP43WS08Z	43	43,6	32,2	10,0	41



Vaso Conico PRIMITIVO white

code	size	Ø	h	Kg	saucer
4G43WS07Z	43	43,5	41,4	10,3	41
4G49WS07Z	49	49,7	45,6	13,1	46
4G60WS07Z	60	60,3	53,5	21,4	51





associated plants

Cactus
Rhipsalis Cassutha



Cachepot PERFETTO white

code	size	Ø	h	Kg	saucer
4S11WSZ	11	11,5	9,2	0,3	-
4S13WSZ	13	13,0	11,6	0,4	-
4S15WSZ	15	15,2	13,0	0,6	-
4S20WSZ	20	20,2	16,3	1,2	-

perfectly suitable
to the pots of the
best nurseries

White Garden



Vaso PERFETTO white

code	size	Ø	h	Kg	saucer
4U24WSZ	24	24,5	19,7	2,3	23
4U29WSZ	29	29,4	23,6	3,6	27
4U39WSZ	39	38,9	30,8	8,2	41
4U50WSZ	50	49,5	38,9	16,2	46





associated plants

Cycas Revoluta



VASO STANDARD white

code	size	Ø	h	Kg	saucer
0113WSZ	13	13,1	11,3	0,4	11
0117WSZ	17	16,6	14,9	0,7	15
0123WSZ	23	23,0	20,3	1,6	19
0127WSZ	27	27,3	24,4	2,5	23
0131WSZ	31	31,5	27,6	3,8	25



Vaso ALTO white

code	size	Ø	h	Kg	saucer
0D22WSZ	22	22,4	24,5	2,2	21
0D26WSZ	26	25,5	29,0	3,2	23
0D30WSZ	30	30,6	33,5	4,6	27



Vaso MAGNO white

code	size	Ø	h	Kg	saucer
0160WSZ	60	60,2	54,3	25,0	51
0178WSZ	78	78,8	70,1	60,0	-

*These pot can be combined with feet
We are at page 55*





associated plants

Bouganvillea
Agapanthus twister
Agapanthus africanus



Vaso CILINDRICO white

code	size	Ø	h	Kg	saucer
4K16WSZ	16	16,2	13,8	0,8	19
4K20WSZ	20	20,3	17,1	1,8	23
4K25WSZ	25	25,2	21,1	2,8	27
4K30WSZ	30	30,6	26,0	4,3	31



Vaso CONO white

code	size	Ø	h	Kg	saucer
3R16WSZ	16	16,0	14,7	0,7	15
3R21WSZ	21	21,0	19,4	1,5	19
3R26WSZ	26	25,7	23,7	2,6	23
3R31WSZ	31	30,8	28,4	4,6	31
3R36WSZ	36	35,7	32,9	6,7	31



Cilindro BORDATO white

code	size	Ø	h	Kg	saucer
OP18WSZ	18	17,6	13,4	0,8	17
OP23WSZ	23	22,8	17,2	1,8	23
OP28WSZ	28	27,8	21,7	3,1	27
OP33WSZ	33	33,6	25,3	5,3	31
OP38WSZ	38	38,4	28,9	6,9	36
OP43WSZ	43	43,6	32,2	10,0	41
OP48WSZ	48	49,0	36,0	13,8	46
OP55WSZ	55	56,7	45,0	22,0	51



Cilindro LIVORNO white

code	size	Ø	h	Kg	saucer
3945WSZ	45	43,8	31,4	12,0	46
3965WSZ	65	66,4	45,6	40,7	-



Vaso DOPPIO BORDO white

code	size	Ø	h	Kg	saucer
3142WSZ	42	42,5	38,7	11,7	31
3152WSZ	52	51,9	46,1	17,5	41
3162WSZ	62	63,1	53,9	30,1	46

*These pot can be combined with feet
We are at page 55*



Machine-Made Terracotta



Ciotola AMERICA Sospesa white

code	size	Ø	h	Kg	saucer
2290WSZ	24	24,0	16,1	2,4	-



Cassetta ROMA LISCIA white

code	size	Ø	h	Kg	saucer
2C32WSZ	32	33x17	14,3	2,6	31
2C42WSZ	42	43x19	17,2	4,5	41
2C52WSZ	52	54x22	19,2	7,4	51



Cassetta GARDA white

code	size	Ø	h	Kg	saucer
4M32WSZ	32	32,2x16,2	13,1	2,4	31
4M42WSZ	42	42,6x18,2	15,6	4,4	41



Ciotola LISCIA white

code	size	Ø	h	Kg	saucer
1Z23WSZ	23	23,0	11,5	1,3	17
1Z27WSZ	27	27,2	12,4	2,1	23
1Z32WSZ	32	31,4	13,7	2,9	27



Sottocassetta white water-repellent

code	size	Ø	h	Kg
OT31WSZ	31	32x17	3,1	0,9
OT41WSZ	41	42,5x21	3,8	1,7
OT51WSZ	51	53x22	4,1	2,8



Sottovaso white water-repellent

code	size	Ø	h	Kg
8711WSZ	11	11,0	1,9	0,1
8715WSZ	15	15,7	2,4	0,3
8719WSZ	19	19,3	2,7	0,5
8721WSZ	21	21,1	3,0	0,6
8723WSZ	23	23,5	3,1	0,8
8725WSZ	25	25,1	3,3	0,9
8727WSZ	27	27,7	3,5	1,1
8731WSZ	31	31,2	4,0	1,6
8736WSZ	36	35,9	4,3	2,2
8741WSZ	41	40,9	4,8	3,3
8746WSZ	46	47,2	5,3	4,6
8751WSZ	51	53,4	5,7	6,1







associated plants

Ruta graveolens
Thymus
Sedum Burito



Vaso Alto DUO grafite white-stripped

code	size	Ø	h	Kg	saucer
0D22JS98Z	22	22,4	24,5	2,2	21
0D26JS98Z	26	25,5	29,0	3,2	23
0D30JS98Z	30	30,6	33,5	4,6	27



Vasum DUO grafite white-stripped

code	size	Ø	h	Kg	saucer
5017JS98Z	17	17,0	12,6	0,7	15
5021JS98Z	21	21,0	16,2	1,2	17
5025JS98Z	25	25,8	19,2	1,8	21
5031JS98Z	31	30,9	23,2	3,1	25
5037JS98Z	37	36,7	27,6	5,4	31





associated plants

Cotinus Coggygria
Spirea Japonica



Vaso Conico PRIMITIVO grafite

code	size	Ø	h	Kg	saucer
4G43JS07Z	43	43,5	41,4	10,3	41
4G49JS07Z	49	49,7	45,6	13,1	-
4G60JS07Z	60	60,3	53,5	21,4	-



Vaso Cono PRIMITIVO grafite

code	size	Ø	h	Kg	saucer
3R31JS07Z	31	30,8	28,4	4,6	29
3R36JS07Z	36	35,7	32,9	6,9	31



Cilindro Bordato PRIMITIVO grafite

code	size	Ø	h	Kg	saucer
0P28JS08Z	28	27,8	21,7	3,1	27
0P33JS08Z	33	33,6	25,3	5,3	31
0P38JS08Z	38	38,4	28,9	6,9	36
0P43JS08Z	43	43,6	32,2	10,0	41





associated plants

Platycerium Alicorne - Pachira Acquatica
 Chamaedorea Elegans - Dicksonia Antartica
 Yucca Elephantipes



Cachepot PERFETTO grafite

code	size	Ø	h	Kg	saucer
4S11JSZ	11	11,5	9,2	0,3	-
4S13JSZ	13	13,0	11,6	0,4	-
4S15JSZ	15	15,2	13,0	0,6	-
4S20JSZ	20	20,2	16,3	1,2	-

perfectly suitable
to the pots of the
best nurseries



Vaso PERFETTO grafite

code	size	Ø	h	Kg	saucer
4U24JSZ	24	24,5	19,7	2,3	23
4U29JSZ	29	29,4	23,6	3,6	27
4U39JSZ	39	38,9	30,8	8,2	41
4U50JSZ	50	49,5	38,9	16,2	-





Vaso STANDARD grafite

code	size	Ø	h	Kg	saucer
0113CSZ	13	13,1	11,3	0,4	11
0117CSZ	17	16,6	14,9	0,7	15
0123CSZ	23	23,0	20,3	1,6	19
0127CSZ	27	27,3	24,4	2,5	23
0131CSZ	31	31,5	27,6	3,8	25



Vaso ALTO grafite

code	size	Ø	h	Kg	saucer
0D22CSZ	22	22,4	24,5	2,2	21
0D26CSZ	26	25,5	29,0	3,2	23
0D30CSZ	30	30,6	33,5	4,6	27



Vaso MAGNO grafite

code	size	Ø	h	Kg	saucer
0160JSZ	60	60,2	54,3	25,0	-
0178JSZ	78	78,8	70,1	60,0	-

These pot can be combined with feet
We are at page 55



associated plants

Lippia citriodora - Rabarbaro
Ocimum basilicum - Rumex acetosa
Capparis spinosa - Origano dictamnuse
Salvia greggii - Mentha spicata





Vaso CONO grafite

code	size	Ø	h	Kg	saucer
3R16CSZ	16	16,0	14,7	0,7	15
3R21CSZ	21	21,0	19,4	1,5	19
3R26CSZ	26	25,7	23,7	2,6	23
3R31CSZ	31	30,8	28,4	4,6	31
3R36CSZ	36	35,7	32,9	6,9	31



Vaso CLINDRICO grafite

code	size	Ø	h	Kg	saucer
4K16JSZ	16	16,2	13,8	0,8	19
4K20JSZ	20	20,3	17,1	1,8	23
4K25JSZ	25	25,2	21,1	2,8	27
4K30JSZ	30	30,6	26,0	4,3	31
4K35JSZ	35	35,7	30,3	6,2	36



Ciotola LISCIA grafite

code	size	Ø	h	Kg	saucer
1Z23CSZ	23	23,0	11,5	1,2	17
1Z27CSZ	27	27,2	12,4	2,0	23
1Z32CSZ	32	31,4	13,7	2,9	27



Cassetta GARDA grafite

code	size	Ø	h	Kg	saucer
4M32JSZ	32	32,2x16,2	13,1	2,4	31
4M42JSZ	42	42,6x18,2	15,6	4,4	41



Sottovaso grafite
water-repellent

code	size	Ø	h	Kg
8711CSZ	11	11,0	1,9	0,1
8715CSZ	15	15,7	2,4	0,3
8719CSZ	19	19,3	2,7	0,5
8721CSZ	21	21,1	3,0	0,6
8723CSZ	23	23,5	3,1	0,8
8725CSZ	25	25,1	3,3	0,9
8727CSZ	27	27,7	3,5	1,1
8731CSZ	31	31,2	4,0	1,6
8736CSZ	36	35,9	4,3	2,2
8741CSZ	41	40,9	4,8	3,5



Sottocassetta grafite
water-repellent

code	size	Ø	h	Kg
OT31CSZ	31	32x17	3,1	0,9
OT41CSZ	41	42,5x21	3,8	1,7





Complementary



Piedino LISCIO white

code	size	Ø	h	Kg
56E4WSZ	04	8x4	3,7	0,12



Piedino LISCIO cotto

code	size	Ø	h	Kg
56E40SZ	04	8x4	3,7	0,12



Piedino LISCIO grafite

code	size	Ø	h	Kg
56E4CSZ	04	8x4	3,7	0,12



Piedino ANTICO white

code	size	Ø	h	Kg
56D4WSZ	04	4x8	6,5	0,2



Piedino ANTICO cotto

code	size	Ø	h	Kg
56D40SZ	04	4x8	6,5	0,2



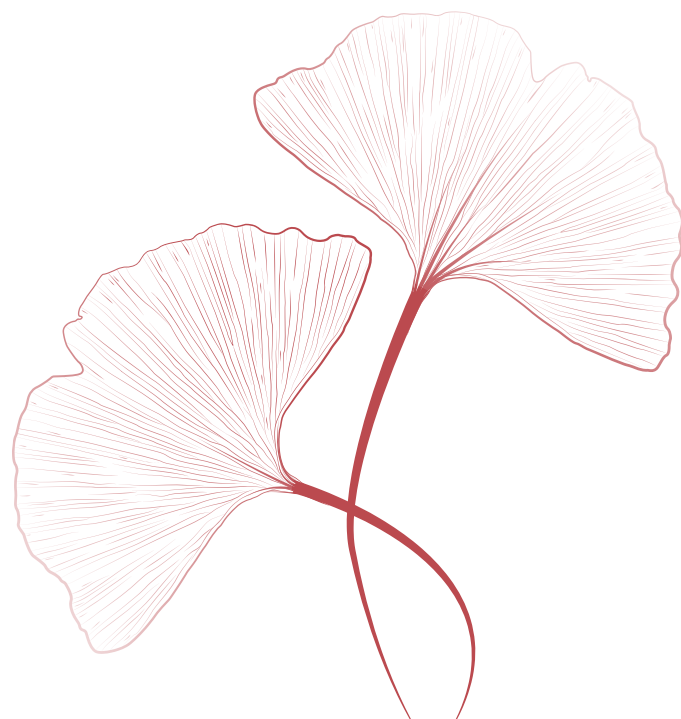
terracotta Galestro

La **terra di Galestro** è una pregiata argilla che proviene dalle colline toscane, particolarmente resistente al gelo e con un'ottima traspirabilità. I minerali all'interno conferiscono alla superficie di ogni vaso affascinanti irregolarità che lo rendono unico e prezioso.

Galestro terra is a fine clay coming from the Tuscan hills, particularly resistant to frost and with excellent breathability. Clay minerals gives fascinating irregularities to the surface of the pot, making it unique and precious.

Galestro-Erde ist ein wertvoller Ton aus den toskanischen Hügeln, besonders frostbeständig und mit hervorragender Atmungsaktivität. Der enthaltene Pyrit bereichert die Oberfläche jedes Stücks mit faszinierenden Unregelmäßigkeiten und macht jedes Stück einzigartig und wertvoll.

Sicilia *new* Giotto
Olive Luna
Siena Etrusco
Mini Siena Saucers



italian tradition

L'elegante Stile Italiano
I vasi di Galestro sono realizzati con argilla proveniente dalle bellissime colline della Toscana utilizzando le più antiche tecniche di lavorazione tipiche della zona e portano un tocco di rustico in giardino.

The Finest Italian Style
Galestro pots are made of clay from the beautiful hills of Tuscany, using the oldest processing techniques typical of the area. Every pot is unique and different from the other and it is perfect to bring a touch of rustic to the garden.

Der feinste italienische Stil
Der Ton für die Galestro-Töpfe wird in den schönen Hügeln der Toscana gewonnen, wobei die ältesten und für die Region typischen Verarbeitungstechniken angewandt werden. Jeder Topf ist einzigartig und unterscheidet sich von den anderen: Perfekt geeignet, um einen Hauch von Rustikalität in den Garten zu bringen.



love of detail

Ricca di Dettagli

La finitura irregolare conferisce al materiale una speciale profondità e crea infinite sfumature di colore. Ogni vaso è unico, ricco di dettagli ed effetti diversi.

Rich in Details

The irregular finishing gives the material an outstanding depth and creates endless color nuances. Every pot is unique, rich in details and different effects.

Reich an Details

Die unregelmäßige Verarbeitung verleiht dem Material eine außergewöhnliche Tiefe und schafft endlose Farbnuancen. Jeder Topf ist einzigartig, reich an Details und unterschiedlichen Effekten.



breathability and durability

Più Traspirabili, Più Resistenti al Gelo

Grazie alla sua particolare composizione, l'argilla Galestro è molto resistente al gelo e altamente traspirante.

Highly Breathable and Resistant to Frost

Due to its particular composition, Galestro clay is extremely frost proof and highly breathable.

Mehr atmungsaktiv, mehr frostbeständig

Aufgrund seiner Zusammensetzung, ist Galestro-Ton extrem frostbeständig und hoch atmungsaktiv.



associated plants

Lippia citriodora - Rabarbaro
 Ocimum basilicum - Rumex acetosa
 Capparis spinosa - Origano dictamnuse
 Salvia greggii - Mentha spicata



Vaso SICILIA

code	size	Ø	h	Kg	saucer
TLU1GSZ	35	35,0	28,5	5,2	35
TLU2GSZ	45	46,0	37,0	14,5	-



Cilindro SICILIA

code	size	Ø	h	Kg	saucer
TLT1GSZ	23	23,0	17,5	2,5	23
TLT2GSZ	29	29,0	21,5	4,0	26



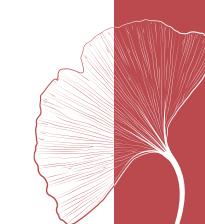
Quadro SICILIA

code	size	Ø	h	Kg	saucer
TKD2GSZ	17	17,0	15,0	1,8	16



Cassetta SICILIA

code	size	Ø	h	Kg	saucer
TKE1GSZ	40	38,5x17	14,5	3,7	40





associated plants

Crassula Minor
Echeveria Miranda
Achillea



Cilindro OLIVE

code	size	Ø	h	Kg	saucer
TG610NSZ	30	30,0	25,0	5,1	26
TG620NSZ	38	38,0	31,5	9,2	35
TG630NSZ	43	43,0	36,0	15,0	-



Quadro OLIVE

code	size	Ø	h	Kg	saucer
TG510NSZ	18	18,0	15,0	1,7	16
TG520NSZ	25	25,0	21,0	3,5	20



Ciotola OLIVE

code	size	Ø	h	Kg	saucer
TG410NSZ	18	18,0	15,0	1,7	15
TG430NSZ	30	30,0	19,2	3,6	23



Cassetta OLIVE

code	size	Ø	h	Kg	saucer
TG110NSZ	30	30x15	11,5	2,1	30
TG120NSZ	40	40x19	14,5	3,9	40
TG130NSZ	50	50x24	18,0	7,9	50





associated plants

Lippia citriodora - Rabarbaro
 Ocimum basilicum - Rumex acetosa
 Capparis spinosa - Origano dictamnuse
 Salvia greggii - Mentha spicata



Vaso SIENA terracotta

code	size	Ø	h	Kg	saucer
TLC4GSZ	23	23,9	19,0	2,1	18
TLC1GSZ	30	29,0	24,1	4,9	26
TLC2GSZ	38	37,5	31,5	9,1	35
TLC3GSZ	50	49,5	41,5	19,5	-



Cubo SIENA terracotta

code	size	Ø	h	Kg	saucer
TLE1GSZ	30	29,5	25,5	6,4	-
TLE2GSZ	40	39,0	32,5	13,8	-



Conico SIENA terracotta

code	size	Ø	h	Kg	saucer
TLD4GSZ	23	23,0	21,0	2,1	18
TLD1GSZ	30	29,0	27,7	5,5	26
TLD2GSZ	38	38,0	36,5	10,2	35
TLD3GSZ	50	50,0	45,9	20,1	-



Cassetta SIENA terracotta

code	size	Ø	h	Kg	saucer
TLF1GSZ	45	45x23,5	22,5	8,1	-
TLF2GSZ	55	55x28	26,7	12,4	-





associated plants

Rhipsalis - Cactus Mix
 Aporocactus - Fittonia - Scindapsus
 Ortensie Anabelle Essicate



Vaso Mini Siena

code	size	Ø	h	Kg	saucer
TLG11SZ	11	11,3	9,4	0,3	-



Vaso Liscio Mini Siena

code	size	Ø	h	Kg	saucer
TLH11SZ	11	10,7	8,7	0,3	-



Quadro Mini Siena

code	size	Ø	h	Kg	saucer
TLJ11SZ	11	11,4	9,6	0,6	-



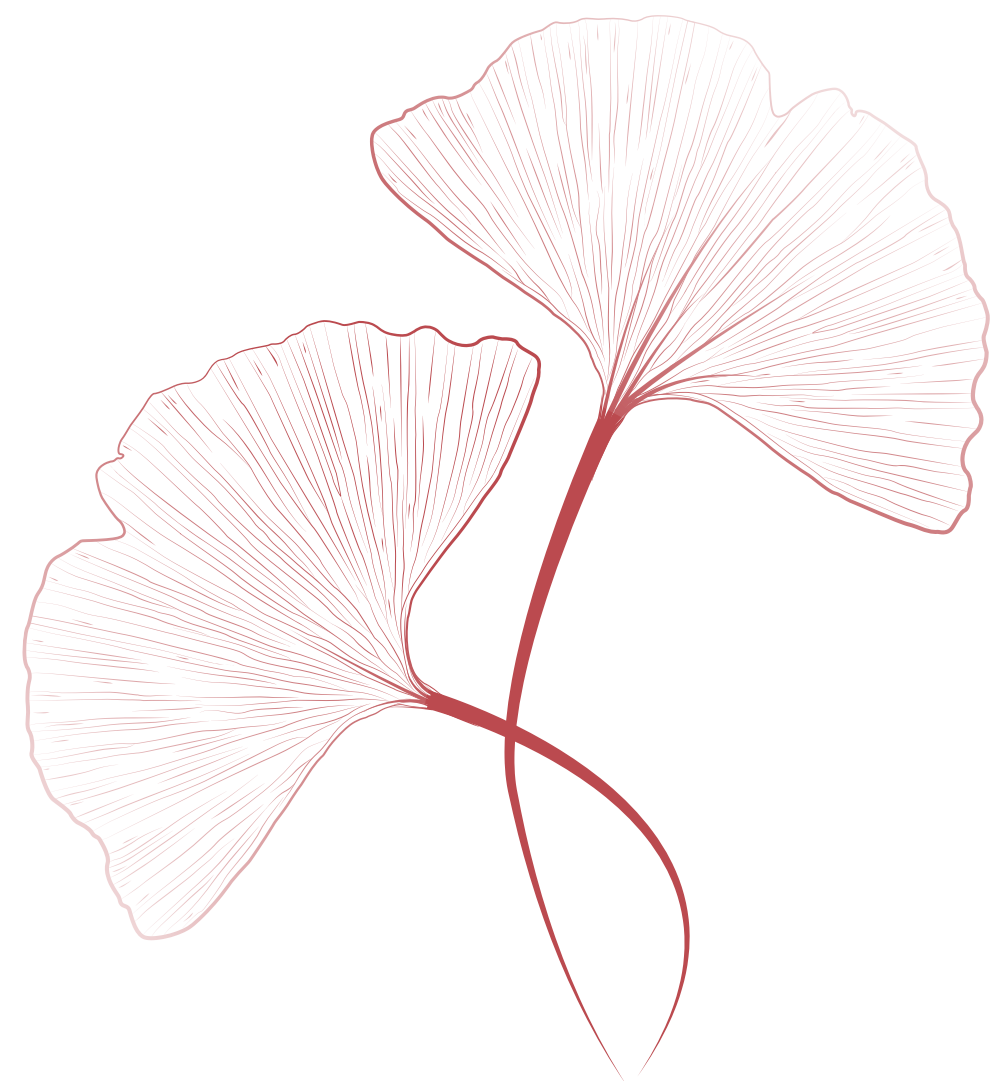
Kit Vaso Mini Siena

code	size	Ø	h	Kg	saucer
TLS11SZ	35	35x11,5	10,5	1,9	



perfectly suitable
 to the pots of the best nurseries
 diameter 9cm







associated plants

Lobelia
Buta graveolens
Euphorbia diamond frost



Vaso GIOTTO

code	size	Ø	h	Kg	saucer
TLW1GSZ	18	18,7	14,3	1,20	-



Cilindro GIOTTO

code	size	Ø	h	Kg	saucer
TLY1GSZ	18	18,4	14,3	1,41	-

M935GVZ Mini Pallet Mix GIOTTO

code	description	sizes	q.ty
TLW1GSZ	Vaso Caliente	18	42
TLY1GSZ	Vaso Caliente	18	42

❖ *Quantità limitata, contattare forza vendita
Limited quantity, please contact the sales staff
Begrenzte Menge, bitte wenden Sie sich an das
Verkaufspersonal*





associated plants

Succulente Mix & Senecio
Peperomia Hovaria
Dendrobium Bamboo



Mini Cilindro LUNA

code	size	Ø	h	Kg
TLV11SZ	11	10,5	8,5	0,3



Cilindro LUNA

code	size	Ø	h	Kg
TLP1GSZ	15	14,7	12,2	1,1
TLP2GSZ	20	20,5	17,0	2,1
TLP3GSZ	26	25,0	21,0	3,6



Ciotola LUNA

code	size	Ø	h	Kg
TLQ1GSZ	26	25,5	9,2	1,9



Cassetta Ovale LUNA

code	size	Ø	h	Kg
TLR1GSZ	33	33x13	12,2	2,1





associated plants

Cuphea Hyssopifolia - Ficus Elastica
 Rhipsalis - Ficus Macrocarpa
 Calathea Meddalick



Vaso Etrusco

code	size	Ø	h	Kg	saucer
TLK1GSZ	20	20,5	19,0	1,9	18
TLK2GSZ	25	24,5	22,1	2,7	23
TLK3GSZ	30	29,5	26,3	4,0	26
TLK4GSZ	38	39,0	32,9	9,0	35



Ciotola Etrusco

code	size	Ø	h	Kg	saucer
TLL1GSZ	28	28,5	12,8	2,4	26



Cassetta Ovale Etrusco

code	size	Ø	h	Kg	saucer
TLM1GSZ	35	35x16	13,5	2,3	35



Sottocassetta Ovale Etrusco

code	size	Ø	h	Kg
TLN1GSZ	35	34,5x16	3,5	1,22





Sottovaso ROTONDO terracotta
water-repellent

code	size	Ø	h	Kg
TGB61SZ	18	18,5	2,9	0,1
TGB51SZ	23	24,0	3,0	0,7
TGB21SZ	26	26,8	3,7	1,3
TGB71SZ	30	30,0	4,0	1,9
TGB31SZ	35	35,1	4,9	2,8



Sottovaso QUADRO terracotta
water-repellent

code	size	Ø	h	Kg
TGD11SZ	16	16,6	2,3	0,5
TGD21SZ	20	20,3	2,8	0,8
TGD31SZ	25	25,8	3,6	1,6



Sottocassetta terracotta
water-repellent

code	size	Ø	h	Kg
TG310SZ	30	30x16	2,5	1,2
TG320SZ	40	40x20	2,8	1,6
TG330SZ	50	50x25	3,2	2,8



terracotta Hand-made

La **terracotta artigianale** di Deroma si ispira all'antica tradizione di creare degli oggetti fatti a mano. Il processo inizia dalla materia prima, quindi dal modellando dell'argilla, fino ad arrivare alla cottura e alla rifinitura finale. Grazie un'esperta lavorazione artigianale, una particolare cura al dettaglio e all'attenta selezione dell'argilla più adatta, vengono prodotti dei vasi unici, originali e dall'aspetto sempre diverso.

*Deroma **handmade terracotta** take inspiration from the ancient tradition of hand-made objects. The process starts from the raw material, then the molding of the clay, the firing and the last finishing. Thanks to a skilled craftsmanship, a particular attention to detail and to the choice of the best clay, every pot is unique, original and different from others.*

*Die **handgefertigte** Terrakotta von Deroma ist inspiriert von der alten Tradition der handgefertigten Gegenstände. Der Prozess beginnt mit dem Rohmaterial, dann folgt das Formen des Tons, das Brennen und die letzte Bearbeitung. Dank des handwerklichen Geschicks, der besonderen Liebe zum Detail und der Auswahl des besten Tons ist jeder Topf einzigartig, originell und anders als andere.*

new Cellini
Atlas
Dulce
Caliente
Animals & Spheres



natural e traspirabile

Ossigenazione e Benessere per la pianta

La terracotta è un materiale naturale e traspirante che permette alle radici della pianta di respirare e la aiuta a crescere in salute.

Plant respiration & well-being

Terracotta is a natural breathable material that allows plant respiration, helping it to grow healthy.

Atmen und Wohlfühlen

Terrakotta ist ein natürliches und atmungsaktives Material, das den Wurzeln das Atmen ermöglicht und ihnen hilft, gesund zu werden.

embrassing imperfection

Vasi di Terracotta fatti a mano

La terracotta fatta a mano racconta la bellezza delle cose autentiche e naturali. Ogni piccola imperfezione, così meravigliosamente naturale, rende ogni vaso unico e diverso da tutti gli altri.

Hand-made terracotta pots

Handmade pottery is about the beauty of genuine things. Every small flaw embodies the magnificence of nature and makes every pot unique and different from others.

Handgemachte Töpfe

Handgemachte Terrakotta erzählt die Schönheit der authentischen und natürlichen Dinge. Jede kleine wunderbare Unvollkommenheit macht jeden Topf einzigartig und verschieden.

variety of choices

Artigianalità ed Eccellenza

I nostri vasi nascono dalla selezione delle migliori argille e vengono lavorati seguendo antiche tecniche artigianali che li rendono unici e preziosi.

Craftmanship and Excellence

We made our pots with a selection of the best clay and ancient craftsmanship techniques which make every pot unique and precious.

Handwerkskunst und hervorragende Qualität

Unsere Töpfe entstehen aus der Auswahl der besten Tone und werden nach alten Handwerkstechniken bearbeitet, die sie einzigartig und wertvoll machen.





associated plants

Lavandula Hidcote
Ajuga Reptans Burgundi Glow
Astilbe Japonica - Fragaria



CELLINI Set/3

code	size	Ø	h	Kg	saucer
Set/3					
012335	21	21,0	20,0	4,70	-
012336	29	29,0	27,0	9,30	-
012337	38	38,0	36,0	15,50	-

61M41 Mix Pallet CELLINI

code	description	sizes	q.ty
012335	Cilindro Cellini	29	6
012336	Cilindro Cellini	31	6
012337	Cilindro Cellini	38	6
012335	Quadro Cellini	22	6
012336	Quadro Cellini	30	6

code	description	sizes	q.ty
012337	Quadro Cellini	38	6
012335	Vaso Cellini	21	6
012336	Vaso Cellini	29	6
012337	Vaso Cellini	38	6

*Prodotti realizzati a mano, le dimensioni possono variare.
Products made by hand, dimensions may vary.
Von Hand gefertigte Produkte; Maße können abweichen.*





associated plants

Rhipsalis
Beaucarnea ramificata



Ciotola ATLAS set/3

code	size	Ø	h	Kg	saucer
Set/3					
012045	29	29,0	14,0	3,5	-
012046	37	37,0	18,0	6,5	-
012047	52	52,0	22,0	14,0	-



Vaso ATLAS set/3

code	size	Ø	h	Kg	saucer
Set/3					
012048	29	29,0	24,0	5,5	-
012049	37	37,0	27,0	8,5	-
012050	52	52,0	34,0	18,5	-



Vaso Alto ATLAS set/3

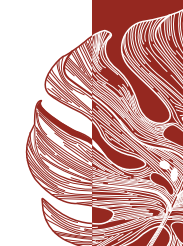
code	size	Ø	h	Kg	saucer
Set/3					
012051	30	28,0	29,5	5,0	-
012052	39	37,0	39,0	15,0	-
012053	51	48,0	51,0	25,0	-

61M35 Mix Pallet ATLAS

code	description	sizes	q.ty
012045	Ciotola Atlas	29	4
012046	Ciotola Atlas	37	4
012047	Ciotola Atlas	52	4
012048	Vaso Atlas	29	4
012049	Vaso Atlas	37	4

code	description	sizes	q.ty
012050	Vaso Atlas	52	4
012051	Vaso Alto Atlas	30	4
012052	Vaso Alto Atlas	39	4
012053	Vaso Alto Atlas	51	4

*Prodotti realizzati a mano, le dimensioni possono variare.
Products made by hand, dimensions may vary.
Von Hand gefertigte Produkte; Maße können abweichen.*





associated plants

Stokesia laevis mels blue
Perovskia atriplicifolia blue spire
Lantana sellowiana



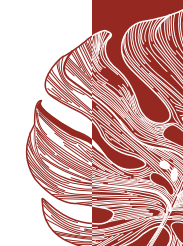
Vaso DULCE Set/3

code	size	Ø	h	Kg	saucer
Set/3					
012055	23	22,5	19,5	2,8	-
012056	28	28,0	25,0	5,0	-
012057	36	36,0	32,0	9,0	-

61M36 Mix Pallet DULCE

code	description	sizes	q.ty
012055	Vaso Dulce	23	18
012056	Vaso Dulce	28	18
012057	Vaso Dulce	36	18

*Prodotti realizzati a mano, le dimensioni possono variare.
Products made by hand, dimensions may vary.
Von Hand gefertigte Produkte; Maße können abweichen.*





associated plants

Nerium Oleander
Yucca



Vaso CALIENTE Set/4

code	size	Ø	h	Kg	saucer
011053	Set/4				
011054	26	26,0	27,0	4,4	-
011055	34	34,0	31,0	7,0	-
011056	42	42,0	36,0	10,2	-
011057	50	50,0	41,0	18,9	-



Vaso LATINO Set/4

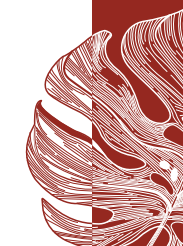
code	size	Ø	h	Kg	saucer
011048	Set/4				
011049	26	26,0	27,0	4,4	-
011050	34	34,0	31,0	7,0	-
011051	42	42,0	36,0	10,2	-
011052	50	50,0	41,0	18,9	-

37M46 Mix Pallet LATINO & CALIENTE

code	description	sizes	q.ty
011054	Vaso Caliente	26	5
011055	Vaso Caliente	34	5
011056	Vaso Caliente	42	5
011057	Vaso Caliente	50	5

code	description	sizes	q.ty
011049	Vaso Latino	26	5
011050	Vaso Latino	34	5
011051	Vaso Latino	42	5
011052	Vaso Latino	50	5

*Prodotti realizzati a mano, le dimensioni possono variare.
Products made by hand, dimensions may vary.
Von Hand gefertigte Produkte; Maße können abweichen.*





Animals & Spheres



CAT terracotta

code	size	dim.	h	Kg
011519		17x13	32,0	2,5



DOG terracotta

code	size	dim.	h	Kg
011521		27x16	32,0	4,0



RABBIT terracotta

code	size	dim.	h	Kg
011515		17,5x15	15,0	1,0



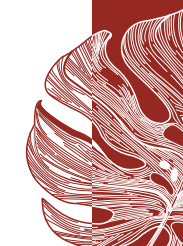
TURTLE terracotta

code	size	dim.	h	Kg
011517		19x16	10	1,0



SPHERES terracotta

code	size	Ø	h	Kg
011510	15	15	15,0	1,0
011512	20	20	20,0	3,0
011514	30	30	30,0	8,0



Glazed Terracotta

La ricerca nello stile e il potenziale espresso dai colori si incontrano nella linea Glazed in un'ampia gamma di colori brillanti e originali. Si tratta di prodotti molto resistenti, fatti con pigmenti atossici e diversi tipi di argilla, capaci di conferire all'ambiente un tocco di stile e personalità.

Glazed terracotta is about style and brilliant, original colors. It is a particular kind of resistant pottery, made with non-toxic pigments and different types of clay, that can give the environment a touch of style and personality.

Bei der Linie Glazed Terracotta geht es um Stil und brillante, originelle Farben. Es handelt sich um eine besondere Art von widerstandsfähiger Keramik, die mit ungiftigen Pigmenten und verschiedenen Tonarten hergestellt, der Umgebung einen Hauch von Stil und Persönlichkeit verleiht.

- new* Ocean
- new* Seaside
- new* Irazu
- Lagoon
- new* Opus
- Nelumbo
- Majorelle
- Acapulco
- Azulejos
- Kinfolk
- new* Romance
- new* Wild Herbs
- new* Woolly
- new* Uccellino
- new* Menagerie
- Caravan
- new* Boracay
- Gingko



passion for colours

Colore ed Emozione

Da sempre i colori comunicano emozioni diverse. Ci possono fare sentire felici o tristi, arrabbiati o rilassati. L'ampia gamma di colori della linea Glazed sa rendere ogni ambiente speciale e conferire al giardino un'aria vibrante e personale.

Colors & Emotion

Colors and emotions are closely linked. Colors can make us feel happy or sad, and they can make us feel hungry or relaxed. The wide range of different colors of Glazed collection can communicate different emotions and can make any garden vibrant and personal.

Farbe und Emotionen

Seit jeher kommunizieren Farben verschiedene Gefühle. Sie können uns froh oder traurig, verärgert oder entspannt machen. Die breite Farbpalette der Glazed Linie lässt jede Umgebung einzigartig und jeden Garten lebendig und persönlich werden.



shine and strenght

Vasi molto resistenti

Il processo di smaltatura conferisce ai vasi una buona resistenza a rotture accidentali.

High Durability Pottery

Ceramic glazed gives pottery a special resistance to breakages for a greater durability.

Langlebige Töpfe

Die Glasur verleiht den Töpfen eine gute Widerstandsfähigkeit gegen versehentlichen Bruch.



style and personality

Esprimi te stesso

Il colore è un modo per esprimere i nostri gusti e la nostra personalità. I vasi colorati Deroma sono perfetti per qualsiasi pianta e creano un'aria vibrante e vivace.

Express Yourself

Color can express personality and mood. Our glazed pots are perfect for any plant and help to create a personal style, giving the garden a vibrant and lively energy.

Persönliche Ausdrucksfähigkeit

Farbe ist eine Möglichkeit, unsere Vorlieben und unsere Persönlichkeit zum Ausdruck zu bringen. Deromas farbige Töpfe sind für jede Pflanze geeignet und schaffen einen persönlichen Stil, sie verleihen dem Garten eine lebendige Atmosphäre.





associated plants

Opuntia consolea
Strelizia nicolai
Sedum



Vaso OCEAN set/4

code	size	Ø	h	Kg	saucer
Set/4					
012343	20	20,0	18,0	2,50	-
012344	25	25,0	21,0	4,40	-
012345	30	30,0	27,0	6,00	-
012346	38	38,0	34,0	11,20	-

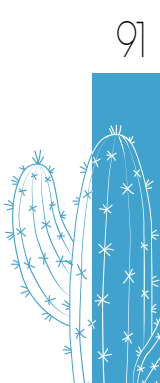
32M456 Mix Pallet OCEAN

code	description	sizes	q.ty
012343	Vaso Ocean	20	18
012344	Vaso Ocean	25	18
012345	Vaso Ocean	30	18

code	description	sizes	q.ty
012346	Vaso Ocean	38	18

Composition of Layer
6 sets of pots :
2 Azure, 2 Acquamarine, 2 Navy Blue

Prodotti realizzati a mano, le dimensioni possono variare.
Products made by hand, dimensions may vary.
Von Hand gefertigte Produkte; Maße können abweichen.





associated plants

Sanseveria Cylindrica Straight et Futura Superba
 Eremurus - Yucca Gloriosa Variegata
 Miscanthus Sinensis Cabaret - Araucaria Araucana



Vaso SEASIDE set/3

code	size	Ø	h	Kg	saucer
Set/3					
012381	23	22,5	19,5	3,3	-
012382	28	28,0	25,0	6,0	-
012383	36	36,0	32,0	12,5	-



Vaso SEASIDE set/3

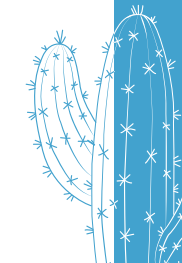
code	size	Ø	h	Kg	saucer
Set/3					
012381	23	22,5	19,5	3,3	-
012382	28	28,0	25,0	6,0	-
012383	36	36,0	32,0	12,5	-

61M42 Mix Pallet SEASIDE

code	description	sizes	q.ty
012381	Vaso Seaside	23	18
012382	Vaso Seaside	38	18
012383	Vaso Seaside	36	18

Composition of Layer
 9 sets of Vase :
 3 Blue, 3 White, 3 Black
 9 sets of Conical :
 3 Blue, 3 White, 3 Black

*Prodotti realizzati a mano, le dimensioni possono variare.
 Products made by hand, dimensions may vary.
 Von Hand gefertigte Produkte; Maße können abweichen.*





associated plants

Ligustrum jonandrum - Dicksonia antarctica
 Convolvulus cneorum - Agave americana
 Pittosforo tobira nana



Ciotola IRAZU set/3

code	size	Ø	h	Kg	saucer
Set/3					
011838	27	27,0	20,0	4,8	-
011839	38	38,0	28,0	11,0	-
011840	53	53,0	38,0	28,0	-



Vaso Alto IRAZU set/2

code	size	Ø	h	Kg	saucer
Set/2					
011850	37	37,0	46,0	14,0	-
011851	46	46,0	54,0	31,0	-

61M44 Mix Pallet IRAZU

code	description	sizes	q.ty
012383	Ciotola Irazu	27	4
011839	Ciotola Irazu	38	4
011840	Ciotola Irazu	53	4
012381	Vaso Alto Irazu	37	5
012382	Vaso Alto Irazu	46	5

*Prodotti realizzati a mano, le dimensioni possono variare.
 Products made by hand, dimensions may vary.
 Von Hand gefertigte Produkte; Maße können abweichen.*

*Quantità limitata, contattare forza vendita
 Limited quantity, please contact the sales staff
 Begrenzte Menge, bitte wenden Sie sich an das
 Verkaufspersonal*





associated plants

Agave americana variegata
Opunthia - Euphorbia ingens



Vaso LAGOON

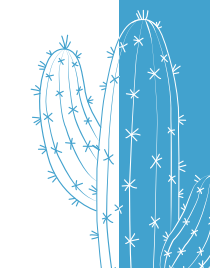
code	size	Ø	h	Kg	saucer
Set/4					
011860	20	20,0	18,0	3,5	-
011861	28	28,0	25,0	7,5	-
011862	38	38,0	31,0	14,0	-
011863	48	48,0	39,0	23,0	-

61M37 Mix Pallet LAGOON

code	description	sizes	q.ty
011860	Vaso Lagoon	20	8
011861	Vaso Lagoon	28	8
011862	Vaso Lagoon	38	8
011863	Vaso Lagoon	48	8

Composition
8 sets of pots :
2 Blue, 3 White, 3 Turquoise

*Prodotti realizzati a mano, le dimensioni possono variare.
Products made by hand, dimensions may vary.
Von Hand gefertigte Produkte; Maße können abweichen.*





associated plants

Picea glauca alberta globe - Myrtus communis
Pinus mugo - Agave americana variegata
Chamaecyparis Pisifera sumgold
Berberis thunbergii harlequin



Vaso OPUS set/3

code	size	Ø	h	Kg	saucer
Set/3					
011889	23	22,5	19,5	3,30	-
011890	28	28,0	25,0	6,00	-
011891	36	36,0	32,0	12,50	-



Vaso OPUS set/3

code	size	Ø	h	Kg	saucer
Set/5					
011889	23	22,5	19,5	3,30	-
011890	28	28,0	25,0	6,00	-
011891	36	36,0	32,0	12,50	-

61M43 Mix Pallet OPUS

code	description	sizes	q.ty
011889	Vaso Opus	23	18
011890	Vaso Opus	28	18
011891	Vaso Opus	36	18

Composition

9 sets of Vase :
3 Black, 3 White, 3 Green
9 sets of Conical :
3 Black, 3 White, 3 Green

*Prodotti realizzati a mano, le dimensioni possono variare.
Products made by hand, dimensions may vary.
Von Hand gefertigte Produkte; Maße können abweichen.*

✦ *Limited quantity, please contact the sales staff
Quantità limitata, contattare forza vendita
Begrenzte Menge, bitte wenden Sie sich an das
Verkaufspersonal*





associated plants

Curcuma Siam & Chlorophytum Comosum
Pilea Peperomioides
Aloe Vera



Vaso NELUMBO set/3

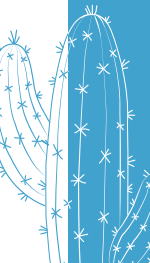
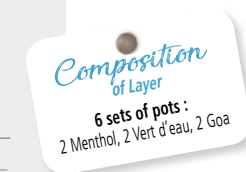
code	size	Ø	h	Kg	saucer
Set/3					
011480	18	18,0	13,0	1,6	-
011481	27	26,5	19,0	3,8	-
011482	37	37,0	25,5	8,6	-

32M426L Layer NELUMBO

code	description	sizes	q.ty
011480	Vaso Nelumbo	18	6
011481	Vaso Nelumbo	27	6
011482	Vaso Nelumbo	37	6

32M426 Mix Pallet NELUMBO

code	description	sizes	q.ty
011480	Vaso Nelumbo	18	18
011481	Vaso Nelumbo	27	18
011482	Vaso Nelumbo	37	18





associated plants

Ripsalis Eteroclada Easy Clada
 Cleome Spinosa
 Buddleja Davidii Summer Longe



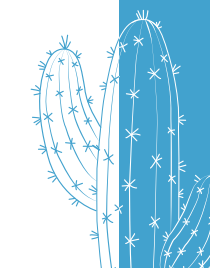
Vaso MAJORELLE set/3

code	size	Ø	h	Kg	saucer
Set/3					
011476	20	20,0	16,0	1,8	-
011477	27	27,0	21,5	4,4	-
011478	37	37,0	27,5	8,7	-

32M443 Mix Pallet MAJORELLE

code	description	sizes	q.ty
011476	Vaso Majorelle	20	18
011477	Vaso Majorelle	27	18
011478	Vaso Majorelle	37	18

Composition
 18 sets of pots :
 6 Light Blue, 6 Mid Blue,
 6 Dark Blue





associated plants

Equisetum Hyemale
Wisteria Spalliera
Caryopteris Clandonensis Blue



Ciotola ACAPULCO set/3

code	size	Ø	h	Kg	saucer
Set/3					
011522	29	29,0	14,0	4,5	-
011523	37	37,0	18,0	9,3	-
011524	48	52,0	25,0	19,3	-



Vaso ACAPULCO set/3

code	size	Ø	h	Kg	saucer
Set/3					
011525	29	29,0	24,0	6,8	-
011526	37	37,0	27,0	10,5	-
011527	48	52,0	34,0	22,8	-



Vaso Alto ACAPULCO set/3

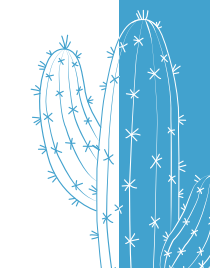
code	size	Ø	h	Kg	saucer
Set/3					
011528	29	28,0	29,5	8,3	-
011529	37	37,0	39,0	15,0	-
011530	48	48,0	51,0	28,0	-

61M10 Mix Pallet ACAPULCO

code	description	sizes	q.ty
011528	Vaso Alto Acapulco	29	4
011529	Vaso Alto Acapulco	37	4
011530	Vaso Alto Acapulco	48	4
011525	Vaso Acapulco	29	4
011526	Vaso Acapulco	37	4

code	description	sizes	q.ty
011527	Vaso Acapulco	48	4
011522	Ciotola Acapulco	29	4
011523	Ciotola Acapulco	37	4
011524	Ciotola Acapulco	48	4

*Prodotti realizzati a mano, le dimensioni possono variare.
Products made by hand, dimensions may vary.
Von Hand gefertigte Produkte; Maße können abweichen.*





associated plants

Musa Dwarf Cavendish - Caladium Candidum
Cyperus - Alternifolius Equisetum Hyemale



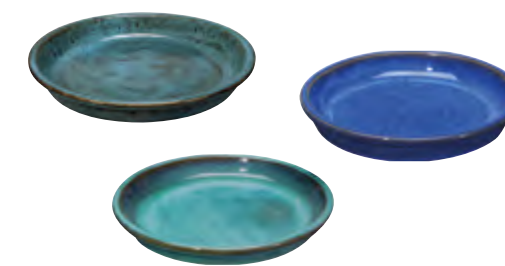
Vaso AZULEJOS Set/3

code	size	Ø	h	Kg	saucer
Set/3					
011122	23	22,5	20,0	2,8	23
011123	28	28,0	24,9	4,6	25
011124	36	36,0	32,0	10,6	32



Vaso AZULEJOS Set/3

code	size	Ø	h	Kg	saucer
Set/3					
011122	23	22,5	20,0	2,8	23
011123	28	28,0	24,9	4,6	25
011124	36	36,0	32,0	10,6	32



Sottovaso AZULEJOS Set/3

code	size	Ø	h	Kg
011125	23	23,0	3,5	0,9
011126	25	25,0	3,5	1,2
011127	32	32,0	4,0	2,0

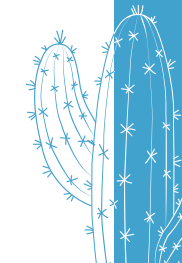
32M378

Mix Pallet AZULEJOS

code	description	sizes	q.ty
011122	Vaso Azulejos	23	16
011123	Vaso Azulejos	28	16
011124	Vaso Azulejos	36	16

code	description	sizes	q.ty
011125	Sottovaso Azulejos	23	8
011126	Sottovaso Azulejos	25	8
011127	Sottovaso Azulejos	32	8

Composition
8 sets of vase :
 3 Turquoise, 2 Blue Lagos, 3 Indigo
8 sets of conical :
 3 Turquoise, 2 Blue Lagos, 3 Indigo
8 sets of saucers :
 3 Turquoise, 2 Blue Lagos, 3 Indigo





Vaso KINFOLK turquoise

code	size	Ø	h	Kg	saucer
010773	23	23,0	20,5	2,6	17
010774	30	29,5	25,5	4,8	22
010775	37	36,5	32,0	8,0	27



Vaso KINFOLK blue

code	size	Ø	h	Kg	saucer
010623	23	23,0	20,5	2,6	17
010624	30	29,5	25,5	4,8	22
010625	37	36,5	32,0	8,0	27



Vaso KINFOLK sable

code	size	Ø	h	Kg	saucer
012059	23	23,0	20,5	2,6	17
012060	30	29,5	25,5	4,8	22
012061	37	36,5	32,0	8,0	27



Sottovaso KINFOLK turquoise

code	size	Ø	h	Kg
010770	17	17,0	3,5	0,6
010771	22	22,0	3,5	0,9
010772	27	27,0	4,0	1,4



Sottovaso KINFOLK blue

code	size	Ø	h	Kg
010767	17	17,0	3,5	0,6
010768	22	22,0	3,5	0,9
010769	27	27,0	4,0	1,4

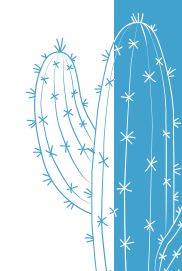


Sottovaso KINFOLK sable

code	size	Ø	h	Kg
012062	17	17,0	3,5	0,6
012064	22	22,0	3,5	0,9
012066	27	27,0	4,0	1,4

associated plants

Yucca filamentosa bright edge
 Dasyliion serratifolium
 Stipa tenuissima pony tails





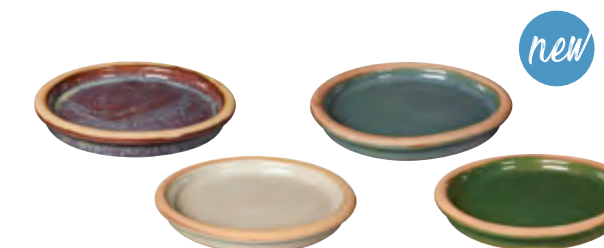
associated plants

Citrus meyer alb. - Limone
Agrumi - Calamondino alb
Cactus



Vaso ROMANCE set/5

code	size	Ø	h	Kg	saucer
Set/5					
012348	18	18,0	14,0	1,2	13
012349	22	22,0	18,0	2,2	18
012350	27	27,0	23,0	4,0	22
012351	33	33,0	27,0	6,2	25
012352	44	44,0	43,0	13,5	31



Sottovaso ROMANCE set/5

code	size	Ø	h	Kg	saucer
Set/5					
012353	13	13,0	2,5	0,3	-
012354	18	17,5	3,0	0,7	-
012355	22	21,5	3,0	1,2	-
012356	25	25,0	3,0	1,6	-
012357	31	31,0	4,0	2,6	-

40M38

Mix Pallet ROMANCE

code	description	sizes	q.ty
012348	Vaso Romance	18	18
012349	Vaso Romance	22	18
012350	Vaso Romance	27	18
012351	Vaso Romance	33	18
012352	Vaso Romance	44	18

code	description	sizes	q.ty
012353	Sottovaso Romance	13	9
012354	Sottovaso Romance	18	9
012355	Sottovaso Romance	22	9
012356	Sottovaso Romance	25	9
012357	Sottovaso Romance	31	9

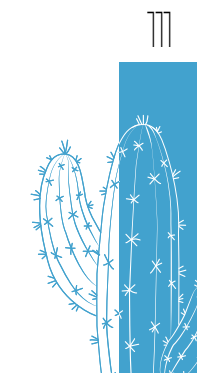
Composition

Set of Pots :

5 Grey-blue, 4 Purple,
5 Cream, 4 Green

Set of Saucer :

2 Grey-blue, 2 Purple,
3 Cream, 2 Green





associated plants

Hemerocallis Stella De Oro - Heuchera
 Dichondra Argentea - Plecrantus Coleoides
 Tradescantia Andersoniana



Vaso WILD HERBS set/5

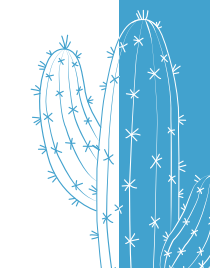
code	size	Ø	h	Kg	saucer
Set/5					
012370	17	17,0	15,0	1,2	-
012371	23	23,0	18,0	2,6	-
012372	29	29,0	21,0	4,2	-
012373	35	35,0	24,0	5,8	-
012374	43	43,0	28,5	8,9	-

40M39 Mix Pallet WILD HERBS

code	description	sizes	q.ty
012370	Vaso Wild Herbs	17	18
012371	Vaso Wild Herbs	23	18
012372	Vaso Wild Herbs	29	18
012373	Vaso Wild Herbs	35	18
012374	Vaso Wild Herbs	43	18

Composition

8 sets of vase :
 3 Brown, 5 Green,
 5 Cream, 5 Blue





Ménagerie Caravane



JOE mix colors

code	size	dim.	h	Kg
012082	25	16x17	25,0	2,5
012080	35	24x22	35,0	4,1



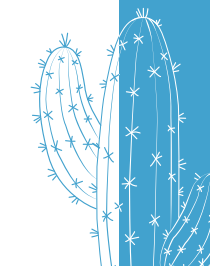
PATO mix colors

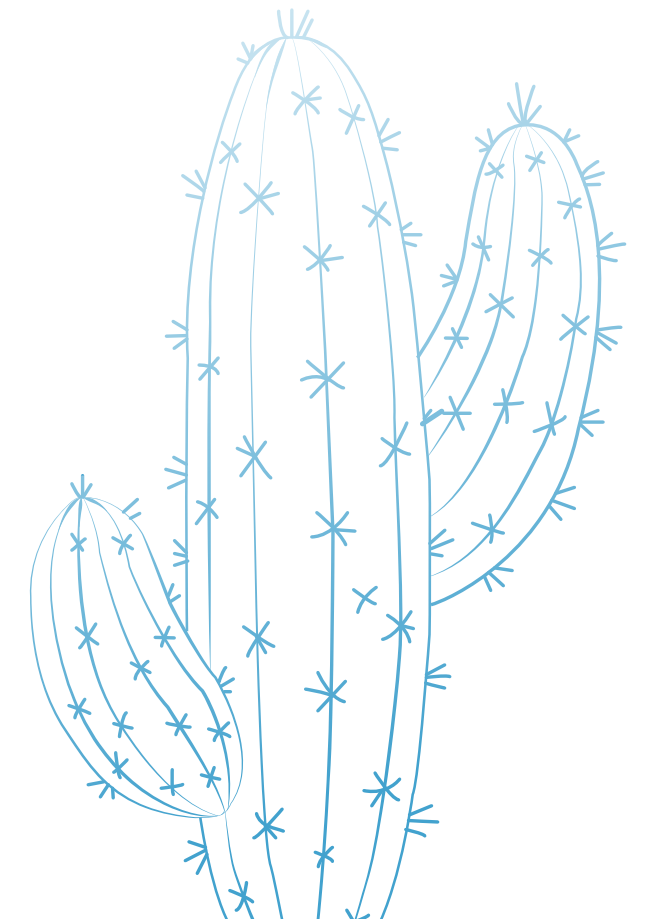
code	size	dim.	h	Kg
012084	33	33,5x16,5	16,0	2,60



COOKY mix colors

code	size	dim.	h	Kg
012086	10	8,5x7,5	10,5	0,20







associated plants

Lavandula hidcote
Heuchera - Hosta
Westringia fruticosa



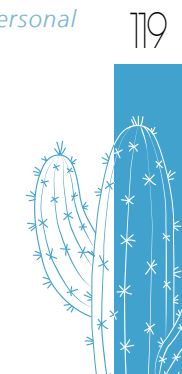
Vaso WOOLLY set/3

code	size	Ø	h	Kg	saucer
Set/3					
012339	23	23,0	22,0	2,80	-
012340	29	29,0	26,0	4,80	-
012341	37	37,0	33,0	8,80	-

32M457 Mix Pallet WOOLLY

code	description	sizes	q.ty
012339	Vaso Woolly	23	18
012340	Vaso Woolly	29	18
012341	Vaso Woolly	37	18

✦ *Quantità limitata, contattare forza vendita
Limited quantity, please contact the sales staff
Begrenzte Menge, bitte wenden Sie sich an das
Verkaufspersonal*





Nest UCCELLINO 20cm mix colors

code	size	Ø	h	Kg
012361	20	17,0x14	20,0	1,20



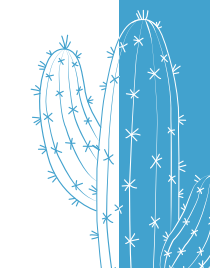
Bath UCCELLINO mix colors

code	size	Ø	h	Kg
012359	24	24,0x23	7,0	1,20



Stick UCCELLINO mix colors

code	size	Ø	h	Kg	saucer
012363	60	11x7,5	60,0	0,2	-





associated plants

Euonymus Fortunei Harlequin
 Dryopteris Filix - Buxus Sempervirens Palla
 Aucuba Japonica - Hosta
 Imperata Cylindrica Red Baron



Cilindro BORACAY set/3

code	size	Ø	h	Kg	saucer
Set/3					
011938	19	19,0	18,0	3,0	-
011939	28	27,5	27,0	6,0	-
011940	36	36,0	35,5	11,0	-



Vaso BORACAY set/3

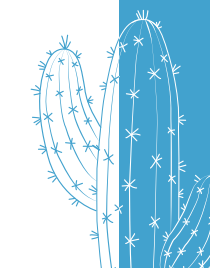
code	size	Ø	h	Kg	saucer
Set/3					
011941	23	22,5	19,0	3,9	-
011942	29	28,5	24,0	5,9	-
011943	37	37,0	31,0	7,8	-

61M40 Mix Pallet BORACAY

code	description	sizes	q.ty
011938	Cilindro Boracay	19	6
011939	Cilindro Boracay	28	6
011940	Cilindro Boracay	36	6
011941	Vaso Boracay	23	12
011942	Vaso Boracay	29	12
011943	Vaso Boracay	37	12

Composition

6 sets of conical :
 3 Nut, 3 Iron gray
 12 sets of pots :
 6 Nut, 6 Iron gray





associated plants

Rhipsalis Heteroclada Easy Clada
Kalancoe Thyrsiflora - Sedum Viridea



Ciotole GINGKO set/2

code	size	Ø	h	Kg	saucer
Set/2					
011469	30	30,0	12,0	3,0	-
011470	36	36,0	15,0	4,5	-



Vaso GINGKO set/3

code	size	Ø	h	Kg	saucer
Set/3					
011466	23	23,0	20,0	3,5	-
011467	30	30,0	27,0	5,5	-
011468	39	39,0	32,0	10,0	-

32M427 Mix Pallet GINGKO

code	description	sizes	q.ty
011466	Vaso Gingko	23	12
011467	Vaso Gingko	30	12
011468	Vaso Gingko	39	12

code	description	sizes	q.ty
011469	Ciotola Gingko	30	12
011470	Ciotola Gingko	36	12

Composition
12 sets of Vase :
4 aqua green, 4 Menthol, 4 Boa
12 sets of Bowl :
4 aqua green, 4 Menthol, 4 Boa



Fiber

Un mix di materiali diversi si traducono in vasi dall'aspetto naturale e dalla finitura unica. Eleganti ed eclettici, sono perfetti per decorare gli spazi esterni con uno stile senza tempo.

A mix of different materials results in light pots, with a natural look and a special finishing. They are elegant, eclectic and they are perfect to decorate outdoor spaces with timeless style.

Ein Mix aus verschiedenen Materialien führt zu natürlich aussehenden Töpfen, mit einer einzigartigen Veredelung. Sie sind elegant und vielseitig und eignen sich perfekt für die Außendekoration in zeitlosem Stil.

Mineral
Rust



terrace, garden, contract

Vasi perfetti per ogni stile di arredo

I vasi in fibra sono perfetti per dare un tocco moderno a ogni ambiente: dalla terrazza di un attico a Barcellona, all'esterno di un loft di design di Francoforte, da un hotel di Lione o la terrazza a rooftop bar di Milano. Le forme geometriche e i colori neutri sono perfetti per arredare qualsiasi spazio con stile e personalità.

Perfect pots for any style

Fiber pots are perfect to give a modern touch to any location: from a penthouse's terrace in Barcelona to a design loft in Frankfurt, from a hotel in Lyon to a rooftop bar in Milan. Their geometric shapes and their neutral colors are perfect to decorate any space with style and personality.

Töpfe für jeden Dekorationsstil

Fiber-Töpfe verleihen jeder Umgebung einen Hauch von Stil: eine Penthouse-Terrasse in Barcelona, der Hinterhof des Design-Hauses am Stadtrand von Frankfurt, ein Konferenzhotel in Lyon oder die Terrasse der letzten trendigen Bar in Mailand. Die geometrischen Formen und die neutralen Farben eignen sich perfekt, um jeden Raum mit Stil und Persönlichkeit zu dekorieren.



projects

Forme e dimensioni per i tuoi progetti

La linea Fiber offre molteplici possibilità di realizzare il proprio progetto paesaggistico, attraverso finiture diverse e forme eleganti e facili da combinare tra loro per creare composizioni originali.

Shapes & Sizes for your Projects

Fiber collections offers different possibilities to realize your landscaping project, through different finishing and stylish design, easy to combine to create special composition.

Verschiedene Ausführungen und stilvolle Formen

Fiberkollektionen bieten endlose Möglichkeiten, Ihr Landschaftsgestaltungsprojekt auszuführen. Die verschiedenen Verzierungen und eleganten Formen lassen sich leicht miteinander kombinieren und so werden Originalkompositionen geschaffen.



the natural touch

Naturalmente Leggero

Più leggero della terracotta e con la finitura naturale raggiunta grazie al mix di materiali ed al lavoro manuale verso una nuova naturalezza.

Light Naturally

Lighter than terracotta with the natural touch achieved thanks to the mix of materials and the handmade work towards a new naturalness.

Leicht & Natürlich

Eine Auswahl von verschiedenen Materialien und eine sorgfältige manuelle Verarbeitung erschaffen eine Reihe von leichten Töpfen mit natürlicher Veredelung, die sich perfekt für die moderne und minimalistische Dekoration von Räumen eignen.



associated plants

Muehlenkoa
Salix Viminalis
Phyllostachys Aurea



Cubo MINERAL set/3

code	size	Ø	h	Kg	saucer
011222	30	30	30,0	5,1	-
011223	40	40	40,0	9,0	-
011224	50	50	50,0	15,0	-



Cassetta MINERAL set/3

code	size	Ø	h	Kg	saucer
011228	60	60x22	30,0	8,0	-
011229	80	80x28	40,0	12,0	-
011230	100	100x35	50,0	20,0	-



Vaso MINERAL set/3

code	size	Ø	h	Kg	saucer
011244	27	27	26,0	1,8	-
011245	34	34	33,0	3,8	-
011246	42	42	41,0	5,7	-



Vaso alto MINERAL set/3

code	size	Ø	h	Kg	saucer
011248	38	28	38,0	6,0	-
011249	46	36	46,0	12,0	-
011250	52	42	52,0	18,0	-





associated plants

Sansevieria Kirkii
Asplenium
Muehlenbeckia



Cubo RUST set/3

code	size	Ø	h	Kg	saucer
009715	set/3				
009716	30	30,0	30,0	5,1	-
009717	40	40,0	40,0	9,0	-
009718	50	50,0	50,0	15,0	-



Cassetta RUST set/3

code	size	Ø	h	Kg	saucer
009720	set/3				
009721	60	60x22	30,0	8,0	-
009722	80	80x28	40,0	12,0	-
009723	100	100x35	50,0	20,0	-



Fence RUST set/2

code	size	Ø	h	Kg	saucer
010463	set/2				
010464	72	60x25	72,0	19,0	-
009809	79	80x30	92,0	28,5	-

66M01

Mix Pallet RUST

code	description	sizes	q.ty
009716	Cubo Rust	30	4
009717	Cubo Rust	40	4
009718	Cubo Rust	50	4
009721	Cassetta Rust	60	3
009722	Cassetta Rust	80	3
009723	Cassetta Rust	100	3



Recyclat material

un circolo virtuoso firmato Deroma
A virtuous circle signed by Deroma
Ein positiver Kreislauf unterzeichnet von Deroma

L'economia circolare è un modello economico che ha come obiettivo la produzione sostenibile di beni e servizi, promuovendone il riutilizzo, la riparazione e la rigenerazione. Si tratta di superare l'economia lineare dell'"usa e getta", limitando il consumo e lo spreco di risorse (materie prime, acqua, energia). Prodotti con plastica proveniente dalla raccolta differenziata, i vasi della collezione Recyclat sono ecologici, durevoli e leggeri e rappresentano la soluzione adatta all'arredo di qualsiasi giardino.

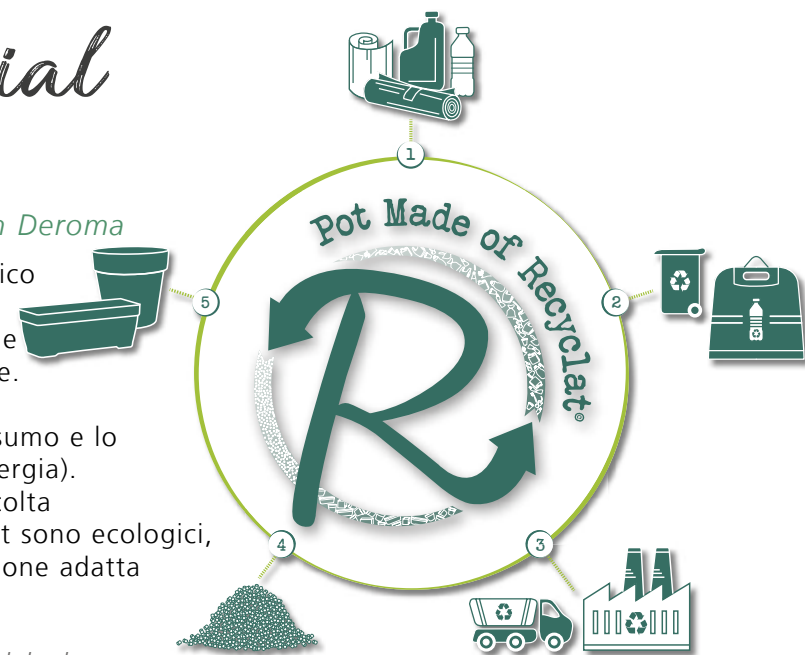
A circular economy refers to an economic model whose objective is to produce goods and services in a sustainable way, promoting products that last and that can be reused, repaired and remanufactured. It is about limiting the consumption and waste of resources (raw materials, water, energy) as well as the production of waste, breaking out with the model of the linear economy, characterized by the "take, make, waste" pattern. Recyclat Collection is made with plastic that comes from waste sorting to realize eco-friendly, durable and light pots that are the perfect solution to decorate any garden.

Die Kreislaufwirtschaft ist ein Wirtschaftsmodell mit dem Ziel, eine nachhaltige Produktion von Waren und Dienstleistungen zu gewährleisten, damit die Weiterverwendung, Reparatur und Regeneration gefördert werden. Es geht darum, die Wegwerfwirtschaft zu überwinden, damit die Verschwendung von Ressourcen und die Abfallerzeugung beschränkt werden (Rohstoffe, Wasser, Energie). Die Recyclat-Kollektion wird aus Kunststoff hergestellt, der aus der Abfalltrennung kommt, um umweltfreundliche, langlebige und leichte Töpfe zu realisieren, die die perfekte Lösung zur Dekoration jedes Gartens sind.

Schema del ciclo di riciclaggio / *Recycling Cycle Diagram* / *Schema des Recycling-Kreislaufs*

- ① Consumo di imballaggi / *Consumption of Packaging* / *Verpackungsverbrauch*
- ② Selezione e raccolta della plastica / *Plastics Sorting and Collection* / *Kunststoffauswahl und Sammlung*
- ③ Rettifica e lavaggio in centri certificati / *Grinding and Washing in certified centres* / *Geschreddert und gereinigt in zertifizierten Zentren*
- ④ Pellettizzazione e rigenerazione del materiale / *Pelletizing and regeneration of the material* / *Pelletisierung und Regeneration*
- ⑤ Fabbricazione di nuovi prodotti in plastica / *Manufacture of new plastic products* / *Herstellung neuer Kunststoffprodukte*

new Like R Save R Ninfea R Day R Rollpot



profondi cambiamenti

Essere virtuosi non è né una moda né un'ingiunzione moralistica. È una presa di coscienza delle questioni ambientali, sociali, etiche... Si tratta di un cambiamento duraturo delle nostre società e una profonda aspettativa dei consumatori, soprattutto per le generazioni Z e i Millennials.

Deep changes

Being virtuous is neither a fashion nor a moral injunction. It is an awareness of environmental, social and ethical issues... It is today a sustainable change in our societies and a deep expectation of consumers.

Especially for the Z and Millennial Generations.

Tiefgreifende Veränderungen

Tugendhaft zu sein ist weder eine Mode noch eine moralische Achtsam. Es ist ein Bewusstsein für ökologische, soziale und ethische Fragen ... Heute ist es eine nachhaltige Veränderung in unserer Gesellschaft und eine tiefe Erwartung der Verbraucher. Besonders für die Z-Generationen und Millennials.

una sentenza inappellabile

Dal 1950, gli esseri umani hanno prodotto 8.9 miliardi di tonnellate di plastica. 6.3 miliardi di tonnellate sono diventati rifiuti, il 9% dei quali è stato riciclato e il 79% accumulato nelle discariche o in natura. Nel 2050, ci sarà più plastica che pesci nell'oceano.

A definitive statement of facts

Since 1950, man has manufactured 8.9 billion tonnes of plastic. 6.3 billion tonnes have become waste, of which 9% has been recycled and 79% has been dumped in landfills or in nature. By 2050, there will be more plastic than fish in the ocean..

Eine endgültige Tatsachenfestellung

Seit 1950 und bis 2015 haben Menschen ungefähr 9 Milliarden Tonnen Plastik produziert. 6,3 Milliarden Tonnen wurden zu Abfällen, von denen nur 9% recycelt und 79% auf Mülldeponien oder in der Natur angesammelt wurden. Bis 2050 wird es im Ozean mehr Plastik als Fische geben.



Valorizzare le plastiche

I prodotti Recyclat sono delle vie concrete per ridurre l'impronta plastica. Sono realizzati con plastica Post-consumo ottenuta raccogliendo imballaggi in plastica scartati dai consumatori nella raccolta differenziata. I vasi Recyclat sono a loro volta riciclabili.

Enhancing the value of plastics

Recyclat products provide concrete ways to reduce the plastic footprint. They are made from post-consumer plastic obtained by collecting plastic packaging thrown away by consumers in selective sorting. Recyclat pots are themselves recyclable.

Wertschätzung von Kunststoffen

Recyclat-Produkte bieten konkrete Möglichkeiten, um die Auswirkungen von Plastikmüll zu verringern. Sie werden aus Post-Consumer-Kunststoff hergestellt, der durch Sammeln von Verpackungsmaterialien gewonnen wird, die von Verbrauchern in einer separaten Sammlung entsorgt wurden. Recyclat-Pflanzgefäße sind recycelbar.

Injection Plastic



associated plants

Helichrisum - Formium
Chamaecyparis Pisifera Sungold



Fence LIKE R anthracite

code	size	Ø	h	Lt	saucer
9EV14SZ	78	78x29,5	65,0	-	-

Anti-deformation bars provided = ideal for placing stakes!



Vaso LIKE R anthracite

code	size	Ø	h	Lt	saucer
9EW74SZ	58	58,0	51,4	90,0	-
9EW84SZ	79	79,0	70,0	230,0	-



Cassettone LIKE R anthracite

code	size	Ø	h	Lt	saucer
9EU14SZ	99	99x38	39,0	-	-

Anti-deformation bars provided = ideal for placing stakes!



Pack of 6 ROLLS anthracite

code	size	Ø	h	Kg
9EZ14FZ	20	20x10	3,0	0,08

30 bags per Display box Dimensions: 29.5x24.5x20cm - Weight 2.4kg

Like R





new

Vaso LIKE R anthracite

code	size	Ø	h	Lt	saucer
9EW14SZ	15	15,0	14,0	2,0	-
9EW24SZ	18	18,0	16,5	2,8	-
9EW34SZ	22	22,0	20,0	5,1	-
9EW44SZ	26	26,0	23,5	8,5	-
9EW54SZ	30	30,0	27,5	13,1	-
9EW64SZ	38	38,0	35,0	26,0	-



new

Kit Cassetta LIKE R anthracite
water reserve



code	size	Ø	h	Lt	saucer
9EY14SZ	49	49x30	19,0	10,2	-



new

Cassetta LIKE R anthracite

code	size	Ø	h	Lt	saucer
9EX14SZ	49	49x18	17,0	10,2	-



new

Fence LIKE R bianco

code	size	Ø	h	Lt	saucer
9EV1ZSZ031	78	78x29,5	65,0	-	-

Anti-deformation bars provided = ideal for placing stakes!



new

Vaso LIKE R bianco

Like R

code	size	Ø	h	Lt	saucer
9EW7ZSZ031	58	58,0	51,7	90,0	-
9EW8ZSZ031	79	79,0	70,2	230,0	-



new

Vaso LIKE R bianco

code	size	Ø	h	Lt	saucer
9EW1ZSZ031	15	15,0	14,0	2,0	-
9EW2ZSZ031	18	18,0	16,5	2,8	-
9EW3ZSZ031	22	22,0	20,0	5,1	-
9EW4ZSZ031	26	26,0	23,5	8,5	-
9EW5ZSZ031	30	30,0	27,5	13,1	-
9EW6ZSZ031	38	38,0	35,0	26,0	-



new

Kit Cassetta LIKE R bianco
water reserve



code	size	Ø	h	Lt	saucer
9EY1ZSZ031	49	49x30	19,0	10,2	-



new

Cassetta LIKE R bianco

code	size	Ø	h	Lt	saucer
9EX1ZSZ031	49	49x18	17,0	10,2	-



new

Cassettone LIKE R bianco

code	size	Ø	h	Lt	saucer
9EU1ZSZ031	99	99x38	39,0	-	-

Anti-deformation bars provided = ideal for placing stakes!



To complement!
Find me on page 135





Vaso LIKE R camel

code	size	Ø	h	Lt	saucer
9EW1VSZ	15	15,0	14,0	2,0	-
9EW2VSZ	18	18,0	16,5	2,8	-
9EW3VSZ	22	22,0	20,0	5,1	-
9EW4VSZ	26	26,0	23,5	8,5	-
9EW5VSZ	30	30,0	27,5	13,1	-
9EW6VSZ	38	38,0	35,0	26,0	-



Kit cassetta LIKE R camel
water reserve

code	size	Ø	h	Lt	saucer
9EY1VSZ	49	49x30	19,0	10,2	-



Fence LIKE R camel

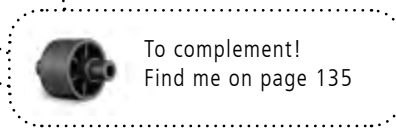
code	size	Ø	h	Lt	saucer
9EV1VSZ	78x28,5	65,0	65,0	-	-

Anti-deformation bars provided = ideal for placing stakes!



Vaso LIKE R camel

code	size	Ø	h	Lt	saucer
9EW7VSZ	58	58,0	51,4	90,0	-
9EW8VSZ	79	70,0	70,2	230,0	-



To complement!
Find me on page 135



Cassettone LIKE R camel

code	size	Ø	h	Lt	saucer
9EU1VSZ	99	99x38	39,0	-	-

Anti-deformation bars provided = ideal for placing stakes!



Cassetta LIKE R camel

code	size	Ø	h	Lt	saucer
9EX1VSZ	49	49x18	17,0	10,2	-

Like R



Recyclat material



associated plants

- Acero Shirasawanum Aureum
- Aloe Vera
- Felce Da Esterno
- Crassula Arborescens Undulatifolia

Save R



Quadro SAVE R anthracite
water reserve

code	size	Ø	h	Lt	saucer
9EB14SZ	17	16,5x16,5	17,0	3,2	-



Vaso SAVE R anthracite
water reserve

code	size	Ø	h	Lt	saucer
9E914SZ	20	19,9	18,0	4,2	-
9E924SZ	25	24,4	22,2	8,0	-
9E934SZ	29	28,8	26,2	13,0	-
9E944SZ	38	38,0	34,3	28,0	-
9E954SZ	48	48,0	43,1	58,0	-



Quadro SAVE R anthracite
water reserve

code	size	Ø	h	Lt	saucer
9EB24SZ	35	35,0	35,0	-	-

new

To complement!
Find me on page 135



Cassettone SAVE R anthracite
water reserve

code	size	Ø	h	Lt	saucer
9ET14SZ	79	79x35	35,0	-	-

Anti-deformation bars provided = ideal for placing stakes!

new





Cassetta SAVE R anthracite
water reserve

code	size	Ø	h	Lt	saucer
9EA24SZ	28	28,3x11,3	11,1	2,5	-



Kit Cassetta SAVE R anthracite
water reserve

code	size	Ø	h	Lt	saucer
9EQ14SZ	49	49,2x29	17,3	10,0	-



Cassetta SAVE R anthracite
water reserve

code	size	Ø	h	Lt	saucer
9EA14SZ	49	49,2x16,5	17,3	10,0	-



Cassetta SAVE R anthracite
water reserve

code	size	Ø	h	Lt	saucer
9EA34SZ	78	78,1x16,6	17,0	17,5	-



Save R

Recyclat material



associated plants

Nepeta Walker's Low - Salvia Greggii
Ocimum Basilicum - Gaura
Eryngium Ebracteatum

Save R



Quadro SAVE R bianco
water reserve

code	size	Ø	h	Lt	saucer
9EB1ZSZ237	17	16,5x16,5	17,0	3,2	-



Vaso SAVE R bianco
water reserve

code	size	Ø	h	Lt	saucer
9E91ZSZ237	20	19,9	18,0	4,2	-
9E92ZSZ237	25	24,4	22,2	8,0	-
9E93ZSZ237	29	28,8	26,2	13,0	-
9E94ZSZ237	38	38,0	34,3	28,0	-
9E95ZSZ237	48	48,0	43,1	58,0	-



Quadro SAVE R bianco
water reserve

code	size	Ø	h	Lt	saucer
9EB2ZSZ237	35	35,0	35,0	-	-

new

To complement!
Find me on page 135



Cassettone SAVE R bianco
water reserve

code	size	Ø	h	Lt	saucer
9ET1ZSZ237	79	79x35	35,0	-	-

Anti-deformation bars provided = ideal for placing stakes!

new





Cassetta SAVE R bianco
water reserve

code	size	Ø	h	Lt	saucer
9EA2ZSZ237	28	28,3x11,3	11,1	2,5	-



Kit Cassetta SAVE R bianco
water reserve

code	size	Ø	h	Lt	saucer
9EQ1ZSZ237	49	49,2x29	17,3	10,0	-



Cassetta SAVE R bianco
water reserve

code	size	Ø	h	Lt	saucer
9EA1ZSZ237	49	49,2x16,5	17,3	10,00	-



Cassetta SAVE R bianco
water reserve

code	size	Ø	h	Lt	saucer
9EA3ZSZ237	78	78,1x16,6	17,0	17,5	-



Recyclat material



associated plants

Sedum - Heuchera
 Celosia deep purple - Gaura butterfly dark pink
 Vitex agnus castus - Gaura siskiyou pink
 Stakys lanata



Quadro SAVE R camel
water reserve

code	size	Ø	h	Lt	saucer
9EB1VSZ	17	16,5x16,5	17,0	3,2	-



Quadro SAVE R camel
water reserve

code	size	Ø	h	Lt	saucer
9EB2VSZ	35	35,0	35,0	-	-



Vaso SAVE R camel
water reserve

code	size	Ø	h	Lt	saucer
9E91VSZ	20	19,9	18,0	4,2	-
9E92VSZ	25	24,4	22,2	8,0	-
9E93VSZ	29	28,8	26,2	13,0	-
9E94VSZ	38	38,0	34,3	28,0	-
9E95VSZ	48	48,0	43,1	58,0	-



Cassettone SAVE R camel
water reserve

code	size	Ø	h	Lt	saucer
9ET1VSZ	79	79x35	35,0	-	-

Anti-deformation bars provided = ideal for placing stakes!



Save R





Cassetta SAVE R camel
water reserve

code	size	Ø	h	Lt	saucer
9EA2VSZ	28	28,3x11,3	11,1	2,5	-



Kit Cassetta SAVE R camel
water reserve

code	size	Ø	h	Lt	saucer
9EQ1VSZ	49	49,2x29	17,3	10,0	-



Cassetta SAVE R camel
water reserve

code	size	Ø	h	Lt	saucer
9EA1VSZ	49	49,2x16,5	17,3	10,00	-



Kit Cassetta SAVE R camel
water reserve

code	size	Ø	h	Lt	saucer
9EA3VSZ	78	78,1x16,6	17,0	17,5	-



Recyclat material



associated plants

Pachira acquatica
Curcuma Siam
Schefflera actin. amate



Cassetta NINFEA R anthracite
with water reserve

code	size	Ø	h	Lt	saucer
9EE14SZ	40	37,6x17,6	17,5	8,0	-
9EE24SZ	50	47,6x17,6	17,5	10,5	-
9EE34SZ	60	57,6x17,6	17,5	13,0	-



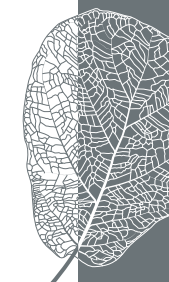
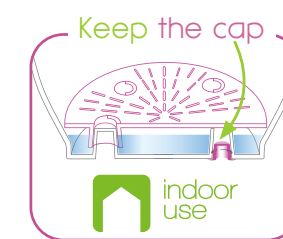
Vaso NINFEA R anthracite
with water reserve

code	size	Ø	h	Lt	saucer
9EC24SZ	22	21,6	17,3	4,4	-
9EC34SZ	26	26,2	20,9	7,5	-
9EC44SZ	30	30,2	24,0	12,0	-
9EC54SZ	34	33,8	27,0	16,5	-
9EC64SZ	40	39,8	31,0	26,5	-
9EC84SZ	52	52,0	41,5	62,0	-



interior view

Ninfea R



Recyclat material



Cassetta NINFEA R camel
with water reserve

code	size	Ø	h	Lt	saucer
9EE1VSZ	40	37,6x17,6	17,5	8,0	-
9EE2VSZ	50	47,6x17,6	17,5	10,5	-
9EE3VSZ	60	57,6x17,6	17,5	13,0	-



Cassetta NINFEA R green
with water reserve

code	size	Ø	h	Lt	saucer
9EE1ZSZ239	40	37,6x17,6	17,5	8,0	-
9EE2ZSZ239	50	47,6x17,6	17,5	10,5	-
9EE3ZSZ239	60	57,6x17,6	17,5	13,0	-



Vaso NINFEA R camel
with water reserve

code	size	Ø	h	Lt	saucer
9EC2VSZ	22	21,6	17,3	4,4	-
9EC3VSZ	26	26,2	20,9	7,5	-
9EC4VSZ	30	30,2	24,0	12,0	-
9EC5VSZ	34	33,8	27,0	16,5	-
9EC6VSZ	40	39,8	31,0	26,5	-
9EC8VSZ	52	52,0	41,5	62,0	-



Vaso NINFEA R verde
with water reserve

code	size	Ø	h	Lt	saucer
9EC2ZSZ239	22	21,6	17,3	4,4	-
9EC3ZSZ239	26	26,2	20,9	7,5	-
9EC4ZSZ239	30	30,2	24,0	12,0	-
9EC5ZSZ239	34	33,8	27,0	16,5	-
9EC6ZSZ239	40	39,8	31,0	26,5	-
9EC8ZSZ239	52	52,0	41,5	62,0	-



Rollpot



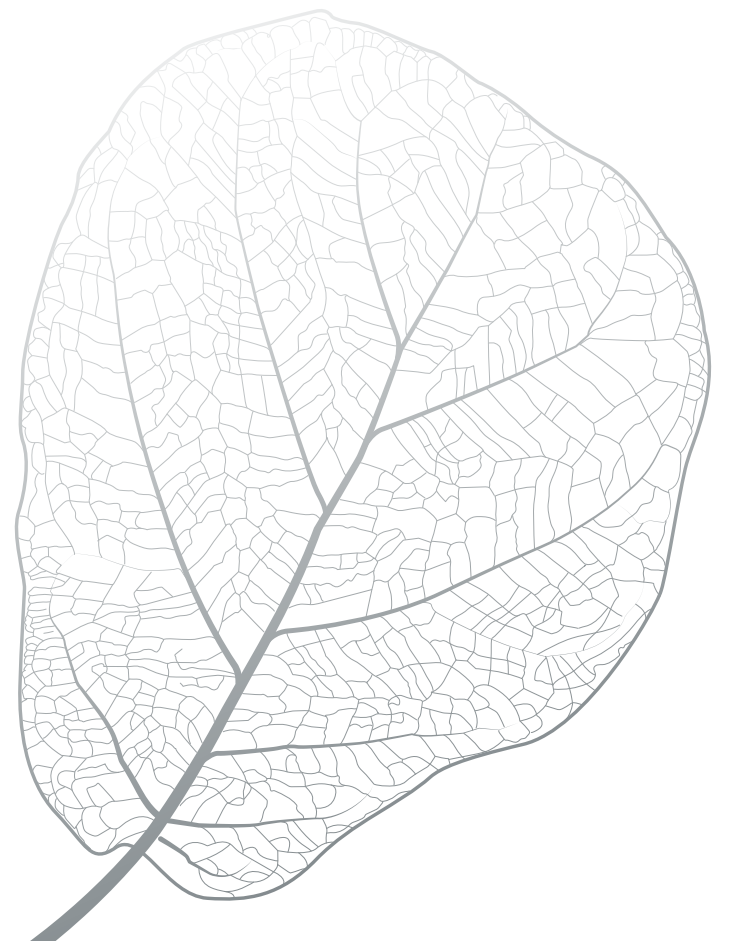
Sottovaso ROLLPOT R anthracite
with wheels

code	size	Ø	h	Kg
9ES14SZ	30	30,0	2,6	0,3
9ES24SZ	39	39,0	2,6	0,5



80 kg
176 lb
MAX





Recyclat material



Day R



associated plants

Lagestroemia Indica
Eryngium Ebracteatum
Hydrangea Panniculata



Cilindro DAY R anthracite

code	size	Ø	h	Lt	saucer
9EFA4SZ	15	15,0	10,8	1,2	14
9EF14SZ	20	20,0	14,2	2,5	18
9EF24SZ	25	25,0	17,7	4,8	22
9EF34SZ	30	30,0	21,2	8,9	26
9EF44SZ	35	35,0	24,6	14,0	30
9EF54SZ	40	40,0	27,2	19,0	35
9EF64SZ	45	45,0	31,4	29,0	40
9EF74SZ	50	50,0	34,9	41,0	45
9EF84SZ	60	60,0	41,8	69,0	52
9BAG4SZ *	70	70,0	49,0	120,0	66
9BAH4SZ *	90	90,0	63,0	260,0	88



Giotola DAY R anthracite

code	size	Ø	h	Lt	saucer
9EG34SZ	30	30,0	11,0	5,2	-
9EG64SZ	35	35,0	12,5	8,0	-
9EG44SZ	40	40,0	14,0	12,0	-
9EG54SZ	50	50,0	18,0	24,0	-

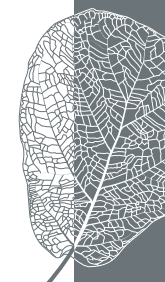


Sottovaso DAY R anthracite

code	size	Ø	h	kg
9EHB4SZ	14	14,0	1,8	0,01
9EH84SZ	18	18,0	2,3	0,02
9EH14SZ	22	22,0	3,0	0,04
9EH24SZ	26	26,0	3,7	0,07
9EH34SZ	30	30,0	4,0	0,09
9EH44SZ	35	35,0	5,0	0,1
9EH54SZ	40	40,0	5,2	0,2
9EH64SZ	45	45,0	5,5	0,3
9EH74SZ	52	52,0	6,6	0,4
9B2G4SZ *	66	66,0	6,0	0,8
9B2H4SZ *	88	88,0	6,5	1,4



* products made with injection plastic



Recyclat material



Cassetta DAY R anthracite

code	size	Ø	h	Lt	saucer
9EJ14SZ	40	40x17	14,5	6,0	40
9EJ24SZ	50	50x17	14,5	8,0	50
9EJ34SZ	60	60x17	14,5	10,0	60
9EJ44SZ	80	80x17	14,5	12,0	80
9EJ54SZ	100	100x18	14,0	25,0	100



Quadro DAY R anthracite

code	size	Ø	h	Lt	saucer
9EK14SZ	32	31,5	27,8	14,4	27
9EK24SZ	38	38,5	33,5	27,4	33
9EK34SZ	45	45,0	40,0	42,7	38



Cassettone DAY R anthracite

code	size	Ø	h	Lt	saucer
9EL34SZ	60	58,5x31	27,5	30,5	60
9EL14SZ	80	79x38,5	33,5	60,0	80
9EL24SZ	100	99x44,5	40,5	92,0	100



Sottocassetta DAY R anthracite

code	size	Ø	h	kg
9EM14SZ	40	38x17,5	3,2	0,1
9EM24SZ	50	47,5x17,5	3,2	0,2
9EM34SZ	60	57,5x17,5	3,2	0,2
9EM44SZ	80	78x18	3,5	0,3
9EM54SZ	100	99x17	3,5	0,3



Sottovaso Quadro DAY R anthracite

code	size	Ø	h	Kg
9EN14SZ	27	27,0	4,0	0,2
9EN24SZ	33	32,5	4,7	0,3
9EN34SZ	38	37,0	5,8	0,4



Sottocassetta XL DAY R anthracite

code	size	Ø	h	kg
9EP34SZ	60	54x27	3,8	0,3
9EP14SZ	80	73x33	4,7	0,5
9EP24SZ	100	91x37	5,9	0,8



Recyclat material



Day R



associated plants

Lagestroemia Indica - Anemone Hybrida
Echinacea Purpurea - Cytisus



Cilindro DAY R camel

code	size	Ø	h	Lt	saucer
9EFAVSZ	15	15,0	10,8	1,2	14
9EF1VSZ	20	20,0	14,2	2,5	18
9EF2VSZ	25	25,0	17,7	4,8	22
9EF3VSZ	30	30,0	21,2	8,9	26
9EF4VSZ	35	35,0	24,6	14,0	30
9EF5VSZ	40	40,0	27,2	19,0	35
9EF6VSZ	45	45,0	31,4	29,0	40
9EF7VSZ	50	50,0	34,9	41,0	45
9EF8VSZ	60	60,0	41,8	69,0	52



Ciotola Day R camel

code	size	Ø	h	Lt	saucer
9EG3VSZ	30	30,0	11,0	5,2	-
9EG6VSZ	35	35,0	12,5	8,0	-
9EG4VSZ	40	40,0	14,0	12,0	-
9EG5VSZ	50	50,0	18,0	24,0	-



Sottovaso DAY R camel

code	size	Ø	h	kg
9EHBVSZ	14	14,0	1,8	0,01
9EH8VSZ	18	18,0	2,3	0,02
9EH1VSZ	22	22,0	3,0	0,04
9EH2VSZ	26	26,0	3,7	0,07
9EH3VSZ	30	30,0	4,0	0,09
9EH4VSZ	35	35,0	5,0	0,1
9EH5VSZ	40	40,0	5,2	0,2
9EH6VSZ	45	45,0	5,5	0,3
9EH7VSZ	52	52,0	6,6	0,4



Recyclat material



Day R



Cassetta DAY R camel

code	size	Ø	h	Lt	saucer
9EJ1VSZ	40	40x17	14,5	6,0	40
9EJ2VSZ	50	50x17	14,5	8,0	50
9EJ3VSZ	60	60x17	14,5	10,0	60



Quadro DAY R camel

code	size	Ø	h	Lt	saucer
9EK1VSZ	32	31,5	27,8	14,4	27
9EK2VSZ	38	38,5	33,5	27,4	33
9EK3VSZ	45	45,0	40,0	42,7	38



Cassettone DAY R camel

code	size	Ø	h	Lt	saucer
9EL3VSZ	60	58,5x31	27,5	30,5	60
9EL1VSZ	80	79x38,5	33,5	60,0	80
9EL2VSZ	100	99x44,5	40,5	92,0	100



Cassetta DAY R verde

code	size	Ø	h	Lt	saucer
9EJ1ZSZ239	40	40x17	14,5	6,0	40
9EJ2ZSZ239	50	50x17	14,5	8,0	50
9EJ3ZSZ239	60	60x17	14,5	10,0	60



Quadro DAY R verde

code	size	Ø	h	Lt	saucer
9EK1ZSZ239	32	31,5	27,8	14,4	27
9EK2ZSZ239	38	38,5	33,5	27,4	33
9EK3ZSZ239	45	45,0	40,0	42,7	38



Cassettone DAY R verde

code	size	Ø	h	Lt	saucer
9EL3ZSZ239	60	58,5x31	27,5	30,5	60
9EL1ZSZ239	80	79x38,5	33,5	60,0	80
9EL2ZSZ239	100	99x44,5	40,5	92,0	100



Sottocassetta DAY R camel

code	size	Ø	h	kg
9EM1VSZ	40	38x17,5	3,2	0,1
9EM2VSZ	50	47,5x17,5	3,2	0,2
9EM3VSZ	60	57,5x17,5	3,2	0,2



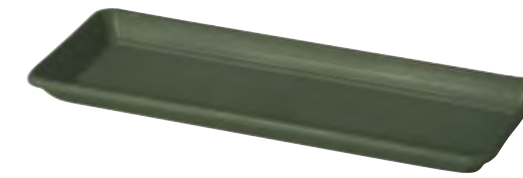
Sottovaso Quadro DAY R camel

code	size	Ø	h	kg
9EN1VSZ	27	27,0	4,0	0,2
9EN2VSZ	33	32,5	4,7	0,3
9EN3VSZ	38	37,0	5,8	0,4



Sottocassetta XL DAY R camel

code	size	Ø	h	kg
9EP3VSZ	60	54x27	3,8	0,3
9EP1VSZ	80	73x33	4,7	0,5
9EP2VSZ	100	91x37	5,9	0,8



Sottocassetta DAY R verde

code	size	Ø	h	kg
9EM1ZSZ239	40	38x17,5	3,2	0,1
9EM2ZSZ239	50	47,5x17,5	3,2	0,2
9EM3ZSZ239	60	57,5x17,5	3,2	0,2



Sottovaso Quadro DAY R verde

code	size	Ø	h	kg
9EN1ZSZ239	27	27,0	4,0	0,2
9EN2ZSZ239	33	32,5	4,7	0,3
9EN3ZSZ239	38	37,0	5,8	0,4



Sottocassetta XL DAY R verde

code	size	Ø	h	kg
9EP3ZSZ239	60	54x27	3,8	0,3
9EP1ZSZ239	80	73x33	4,7	0,5
9EP2ZSZ239	100	91x37	5,9	0,8



Recyclat material



Cilindro DAY R verde

code	size	Ø	h	Lt	saucer
9EFAZSZ239	15	15,0	10,8	1,2	14
9EF1ZSZ239	20	20,0	14,2	2,5	18
9EF2ZSZ239	25	25,0	17,7	4,8	22
9EF3ZSZ239	30	30,0	21,2	8,9	26
9EF4ZSZ239	35	35,0	24,6	14,0	30
9EF5ZSZ239	40	40,0	27,2	19,0	35
9EF6ZSZ239	45	45,0	31,4	29,0	40
9EF7ZSZ239	50	50,0	34,9	41,0	45
9EF8ZSZ239	60	60,0	41,8	69,0	52



Sottovaso DAY R verde

code	size	Ø	h	kg
9EHBZSZ239	14	14,0	1,8	0,01
9EH8ZSZ239	18	18,0	2,3	0,02
9EH1ZSZ239	22	22,0	3,0	0,04
9EH2ZSZ239	26	26,0	3,7	0,07
9EH3ZSZ239	30	30,0	4,0	0,09
9EH4ZSZ239	35	35,0	5,0	0,1
9EH5ZSZ239	40	40,0	5,2	0,2
9EH6ZSZ239	45	45,0	5,5	0,3
9EH7ZSZ239	52	52,0	6,6	0,4



Ciotola DAY R verde

code	size	Ø	h	Lt	saucer
9EG3ZSZ239	30	30,0	11,0	5,2	-
9EG6ZSZ239	35	35,0	12,5	8,0	-
9EG4ZSZ239	40	40,0	14,0	12,0	-
9EG5ZSZ239	50	50,0	18,0	24,0	-



Cilindro DAY R cotto

code	size	Ø	h	Lt	saucer
9EFA0SZ	15	15,0	10,8	1,2	14
9EF10SZ	20	20,0	14,2	2,5	18
9EF20SZ	25	25,0	17,7	4,8	22
9EF30SZ	30	30,0	21,2	8,9	26
9EF40SZ	35	35,0	24,6	14,0	30
9EF50SZ	40	40,0	27,2	19,0	35
9EF60SZ	45	45,0	31,4	29,0	40
9EF70SZ	50	50,0	34,9	41,0	45
9EF80SZ	60	60,0	41,8	69,0	52
9BAG0SZ *	70	70,0	49,0	120,0	66
9BAH0SZ *	90	90,0	63,0	260,0	88



Sottovaso DAY R cotto

code	size	Ø	h	kg
9EHB0SZ	14	14,0	1,8	0,01
9EH80SZ	18	18,0	2,3	0,02
9EH10SZ	22	22,0	3,0	0,04
9EH20SZ	26	26,0	3,7	0,07
9EH30SZ	30	30,0	4,0	0,09
9EH40SZ	35	35,0	5,0	0,1
9EH50SZ	40	40,0	5,2	0,2
9EH60SZ	45	45,0	5,5	0,3
9EH70SZ	52	52,0	6,6	0,4
9B2G0SZ *	66	66,0	6,0	0,8
9B2H0SZ *	88	88,0	6,5	1,4



Ciotola DAY R cotto

code	size	Ø	h	Lt	saucer
9EG30SZ	30	30,0	11,0	5,2	-
9EG60SZ	35	35,0	12,5	8,0	-
9EG40SZ	40	40,0	14,0	12,0	-
9EG50SZ	50	50,0	18,0	24,0	-

Day R

* products made with injection plastic



Recyclat material



Cassetta DAY R cotto

code	size	Ø	h	Lt	saucer
9EJ10SZ	40	40x17	14,5	6,0	40
9EJ20SZ	50	50x17	14,5	8,0	50
9EJ30SZ	60	60x17	14,5	10,0	60
9EJ40SZ	80	80x17	14,5	12,0	80
9EJ50SZ	100	100x18	14,0	25,0	100



Quadro DAY R cotto

code	size	Ø	h	Lt	saucer
9EK10SZ	32	31,5	27,8	14,4	27
9EK20SZ	38	38,5	33,5	27,4	33
9EK30SZ	45	45,0	40,0	42,7	38



Cassettone DAY R cotto

code	size	Ø	h	Lt	saucer
9EL30SZ	60	58,5x31	27,5	30,5	60
9EL10SZ	80	79x38,5	33,5	60,0	80
9EL20SZ	100	99x44,5	40,5	92,0	100



Sottocassetta DAY R cotto

code	size	Ø	h	kg
9EM10SZ	40	38x17,5	3,2	0,1
9EM20SZ	50	47,5x17,5	3,2	0,2
9EM30SZ	60	57,5x17,5	3,2	0,2
9EM40SZ	80	78x18	3,5	0,3
9EM50SZ	100	99x17	3,5	0,3



Sottovaso Quadro DAY R cotto

code	size	Ø	h	kg
9EN10SZ	27	27,0	4,0	0,2
9EN20SZ	33	32,5	4,7	0,3
9EN30SZ	38	37,0	5,8	0,4



Sottocassetta XL DAY R cotto

code	size	Ø	h	kg
9EP30SZ	60	54x27	3,8	0,3
9EP10SZ	80	73x33	4,7	0,5
9EP20SZ	100	91x37	5,9	0,8



Injection Plastic

Innovazione considerata come materia prima, questa è la filosofia di Deroma. Nella **linea Plastic** si combinano estetica e funzionalità portando alla creazione di vasi forti, ma estremamente leggeri; oltre ad accessori unici che aumentano le prestazioni del prodotto.

*Innovation considered as a raw material, this is Deroma's philosophy. In the **Plastic section**, aesthetic and functional innovation combine, leading to the creation of large-sized pots, strong and yet extremely light, besides unique accessories that increase product performance.*

*Innovation als Rohstoff betrachten, dies ist die Philosophie von Deroma. Im **Bereich Kunststoff** vereinen sich ästhetische und funktionale Innovationen, die zur Entwicklung großformatiger Töpfe, robust und gleichzeitig extrem leicht, einzigartige Accessoires, die die Produktleistung steigern.*

Millennium

Enjoy

Samba



light

Leggerezza e Convenienza

La leggerezza è il principale vantaggio dei vasi di plastica. Quando si cerca un vaso leggero, conveniente anche in formati più grandi, la plastica è la risposta.

Lightness & Convenience

Lightness is the main advantage of plastic pots. When looking for a light, convenient and affordable pot even in bigger sizes, plastic is the answer.

Leicht & Praktisch

Leichtigkeit ist der Hauptvorteil von Kunststofftöpfen. Auf der Suche nach einem leichten, praktischen und erschwinglichen Topf auch in größeren Größen ist Kunststoff die Antwort.

recyclable

Riusali o Riciclati

La plastica è leggera, resistente ed economica. Riciclare o riutilizzare è essenziale per un uso sostenibile. La riserva d'acqua presente in alcuni dei nostri vasi di plastica aiuta anche a ridurre il consumo di acqua.

Reuse it or Recycle

Plastic is light, resistant and economical. Recycling or reusing is essential for a sustainable use. The water reserve some of our plastic pot offers helps also to reduce water consumption.

Wiederverwendung oder Recycling

Kunststoff ist leicht, widerstandsfähig und wirtschaftlich. Recycling oder Wiederverwendung ist eine wesentliche Eigenschaft für eine umweltbewusste Nutzung. Einige Blumentöpfe aus unserer Kunststoffpalette, die über ein Wasserreservat verfügen, helfen den Wasserverbrauch zu reduzieren.



fun

Un Mondo di Colori

La plastica porta colore nella tua vita e quindi emozione e gioia. „Take it easy“ e smettiti di essere così serio per un po' :-)

A World of Colours

Plastic brings colour into your life and so it brings emotion and joy. Take it easy and stop being so serious for a while :-)

Eine Welt der Farben

Plastik bringt Farbe in dein Leben und bringt es mit Emotion und Freude. „Take it easy“ ist das Motto und hör auf so ernst zu sein für eine Weile :-)



Injection Plastic



associated plants

Phormium tenax variegatum
Arundo Donax - Stipa tenuissima pony tails
Imperata cylindrica red baron - Olea europea

Millennium



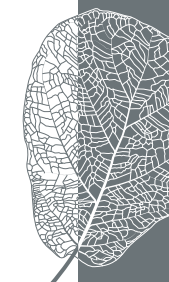
Vaso MILLENNIUM brownstone
with water reserve and wheels

code	size	Ø	h	Lt	saucer
9ER1ZS2216A	59	59,0	49,0	79,0	-



Vaso MILLENNIUM H53 brownstone
water reserve

code	size	Ø	h	Lt	saucer
9DQ1ZS2216A	53	43,5	53,3	48,0	-





Injection Plastic



Millennium





Cassetta MILLENNIUM brownstone
water reserve

	code	size	Ø	h	Lt	saucer
	9DG2ZSZ216A	59	59x25	25,0	26,0	-






Cassetta MILLENNIUM brownstone
water reserve

	code	size	Ø	h	Lt	saucer
	9DG1ZSZ216A	79	78,5x39	39,1	73,0	-



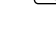



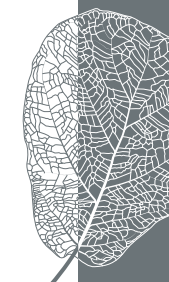
Cubo MILLENNIUM brownstone
water reserve

	code	size	Ø	h	Lt	saucer
	9DF2ZSZ216A	25	25,0	25,0	10,0	-
	9DF1ZSZ216A	39	39,0	39,0	40,4	-



Cubo MILLENNIUM brownstone
with water reserve and wheels

		code	size	Ø	h	Lt	saucer
		9DF3ZSZ216A	49	49,0	49,0	80,0	-



Injection Plastic







associated plants

Calamagrostis Acutiflora Overdam
Plectranthus Coleoides





Vaso MILLENNIUM anthracite
with water reserve and wheels

		code	size	Ø	h	Lt	saucer
		9ER14SZA	59	59,0	49,0	79,0	-



Vaso MILLENNIUM H53 anthracite
water reserve

	code	size	Ø	h	Lt	saucer
	9DQ14SZA	53	43,5	53,3	48,0	-

Millennium





Casseta MILLENNIUM anthracite
water reserve

code	size	Ø	h	Lt	saucer
9DG24SZA	59	59x25	25,0	26,0	-



Casseta MILLENNIUM anthracite
water reserve

code	size	Ø	h	Lt	saucer
9DG14SZA	79	78,5x39	39,0	73,0	-



Cubo MILLENNIUM anthracite
water reserve

code	size	Ø	h	Lt	saucer
9DF24SZA	25	25,0	25,0	10,0	-
9DF14SZA	39	39,0	39,0	40,4	-



Cubo MILLENNIUM anthracite
with water reserve and weels

code	size	Ø	h	Lt	saucer
9DF34SZA	49	49,0	49,0	80,0	-



Injection Plastic



associated plants

Hidrangea paniculata candlelight
 Lagestroemia indica enduring red
 Lonicera nitida - Canna Indica - Allium



Cassetta MILLENNIUM sandstone
 water reserve

code	size	Ø	h	Lt	saucer
9DG26SZA	59	59x25	25,0	26,0	-



Cubo MILLENNIUM sandstone
 water reserve

code	size	Ø	h	Lt	saucer
9DF26SZA	25	25,0	25,0	10,0	-
9DF16SZA	39	39,0	39,0	40,4	-



Cassetta MILLENNIUM sandstone
 water reserve

code	size	Ø	h	Lt	saucer
9DG16SZA	79	78,5x39	39,1	73,0	-



Cubo MILLENNIUM sandstone
 with water reserve and wheels

code	size	Ø	h	Lt	saucer
9DF36SZA	49	49,0	49,0	80,0	-

Millennium



Injection Plastic



Millennium



associated plants

Phormium tenax variegatum
Musa dwarf cavendish - Carex oshimensis everillo
Olea europea - Fargesia angustissima
Adenum rosa



Vaso MILLENNIUM pearl
with water reserve and wheels

code	size	Ø	h	Lt	saucer
9ER1QSZA	59	59,0	49,0	79,0	-




Vaso MILLENNIUM H53 pearl
water reserve

code	size	Ø	h	Lt	saucer
9DQ1QSZA	53	43,5	53,3	48,0	-






Cassetta MILLENNIUM pearl
water reserve

	code	size	Ø	h	Lt	saucer
	9DG2QSZA	59	59x25	25,0	26,0	-





Cassetta MILLENNIUM pearl
water reserve

	code	size	Ø	h	Lt	saucer
	9DG1QSZA	79	78,5x39	39,1	73,0	-




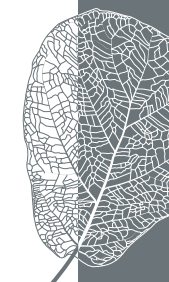
Cubo MILLENNIUM pearl
water reserve

	code	size	Ø	h	Lt	saucer
	9DF2QSZA	25	25,0	25,0	10,0	-
	9DF1QSZA	39	39,0	39,0	40,4	-



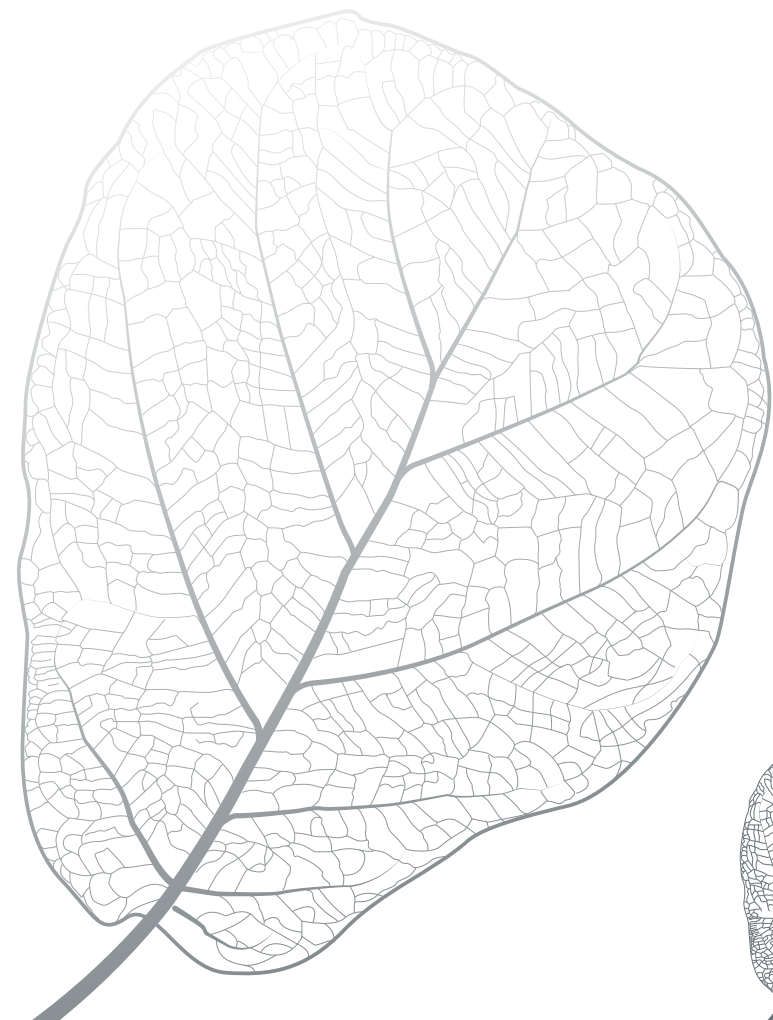
Cubo MILLENNIUM pearl
with water reserve and wheels

	code	size	Ø	h	Lt	saucer
	9DF3QSZA	49	49,0	49,0	80,0	-





Millennium brownstone





Transparent saucer



Sottovaso TRASPARENTE


code	size	Ø	h	kg
9BT2ZSZ000	14	14,0	1,8	0,03
9BT3ZSZ000	16	16,0	1,9	0,04
9BT4ZSZ000	20	20,0	2,9	0,09
9BT5ZSZ000	24	24,0	3,6	0,15
9BT6ZSZ000	28	28,0	4,0	0,24
9BT7ZSZ000	32	32,0	5,2	0,34



Enjoy



Trio Cassetta ENJOY anthracite
water reserve

	code	size	Ø	h	Lt	saucer
	9DB14SZP	50	49x16	21,0	28,8	-



Injection Plastic



Samba



Vaso BALCONY concrete water reserve

code	size	Ø	h	Lt	saucer
9BX1ZSZ309	30	39,5x29	25,2	9,4	-



Vaso BALCONY anthracite water reserve

code	size	Ø	h	Lt	saucer
9BX14SZ	30	39,5x29	25,2	9,4	-



Vaso BALCONY concrete water reserve

code	size	Ø	h	Lt	saucer
9D61ZSZ309	55	54,5x27,7	25,2	21,6	-



Cassetta BALCONY anthracite water reserve

code	size	Ø	h	Lt	saucer
9D614SZ	55	54,5x27,7	25,2	21,6	-



The photographs and the technical information in the catalogue are indicative and can be modified – even without notice – at the discretion of the firm at any moment.

Le foto illustrative e le informazioni tecniche contenute nel catalogo sono indicative e possono essere modificate - anche senza preavviso - a discrezione dell'azienda in qualsiasi momento.

Abbildungen sowie technische Informationen in diesem Katalog sind ohne Gewähr und können - auch ohne vorherige Ankündigung - jederzeit geändert werden.

AD: Service Marketing Deroma

Photo: Studio Sabbadin - Studio L'Oeil Ecoute - Adobe Stock - Luca Brusaferrero Photographer

Styling: Top Team/Dina Mazzucato Schiller

Garden Designers: Donnedifiori s.a.s. di Pavan Aurora & C.

Thanks to: Maso di Villa Relais di campagna, Susegana TV, www.masodivilla.it - Locanda Rosa Rosae, Breda di Piave, www.locandarosarosae.it - B&B La Mugletta, Teolo, www.lamugletta.com
Attico Summano, Schio www.atticosummano.it - Glamping Canonici San Marco, Mirano Ve www.glampingcanonici.com - Feeling Beach SABBIA & SALE Isolaverde Chioggia Ve, www.sabbiaesale.it
Pub COLONIAL INN Treviso Centro, www.pubcolonialinn.com - Bagni Capannina Isolaverde Chioggia, www.bagnicapannina.it - Agriturismo di Design Sacramora 12 Faenza, www.sacramora12.it
B&B Rio Calvane San Lazzaro di Savena Bo, www.bbriocalvane.it - Ristorante KOFLEK KAFE' Padova, www.KKofler.com - Ristorante LE CEMENTINE Roncade Tv, www.le-cementine.com
Beach Club SAND Sottomarina Chioggia, www.sandbeachclub.it - Il Giardino di Cristallo, Scrigno Botanico Padova, Collezione di piante del prof. Angelo Gino Levis Quadri d'autore Flavio Galletti

Color separation : Compagnia Nazionale Italiana compagnianazionale.com

Printed in Italy by CNI Srl

August 2022 Deroma ©